



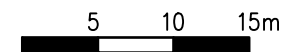
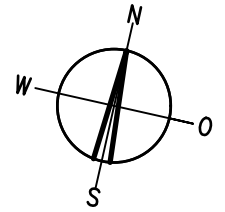
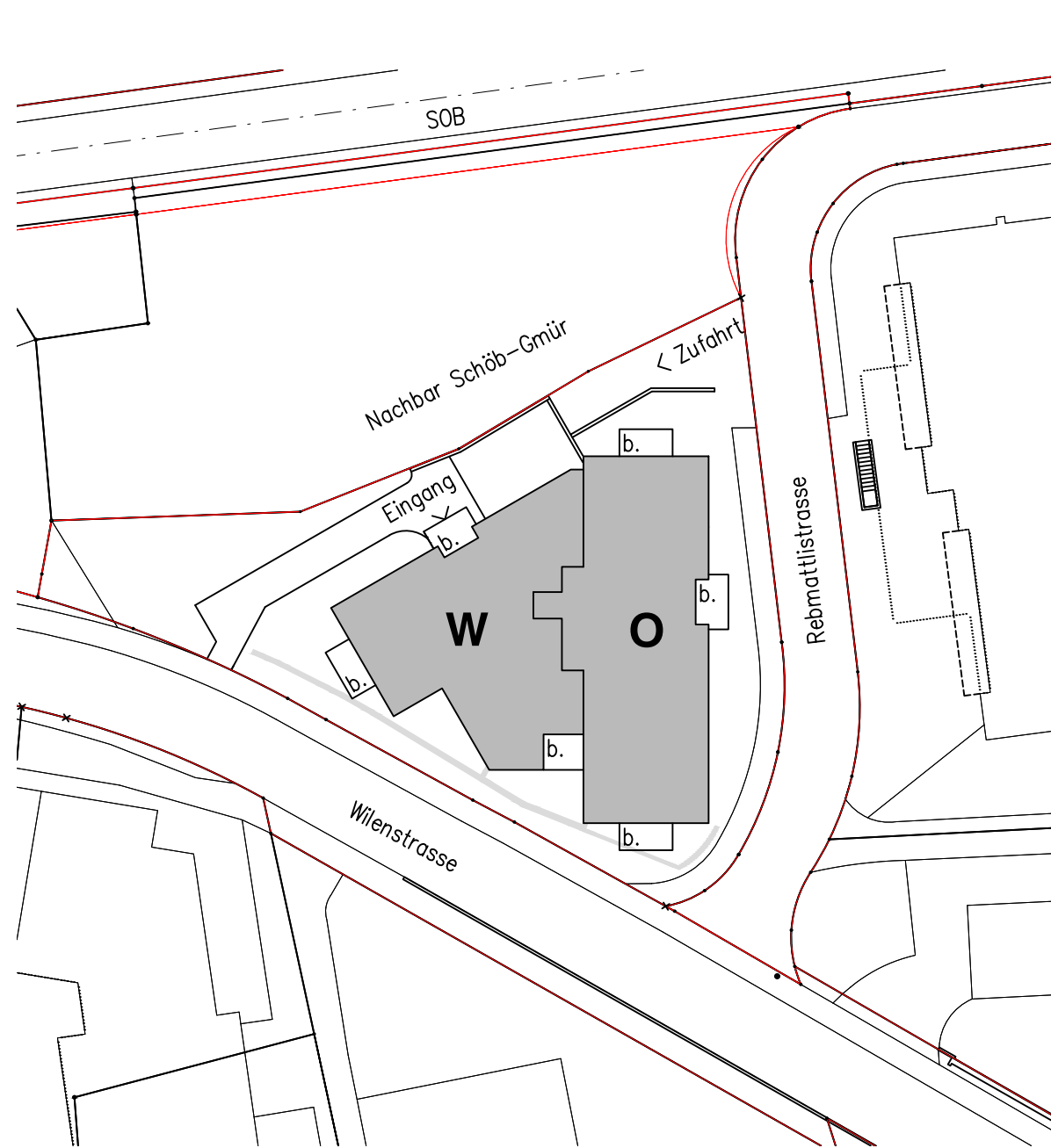
Neubau Genossenschaft für Alterswohnungen

«Rebmattli» Wilen SZ

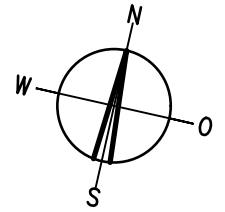
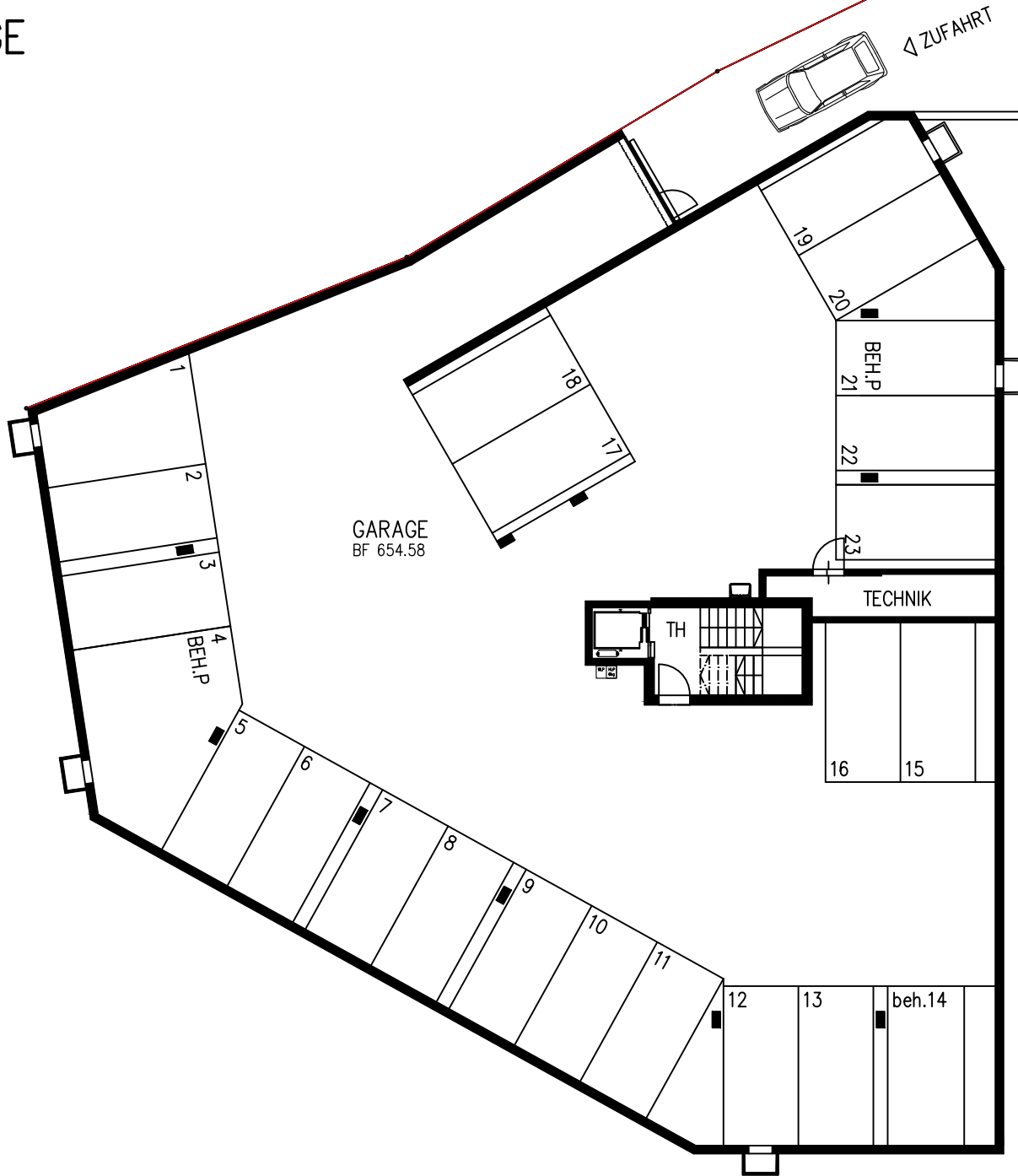


Unterlagen für Mietinteressenten

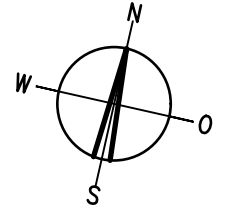
Situation



TIEFGARAGE

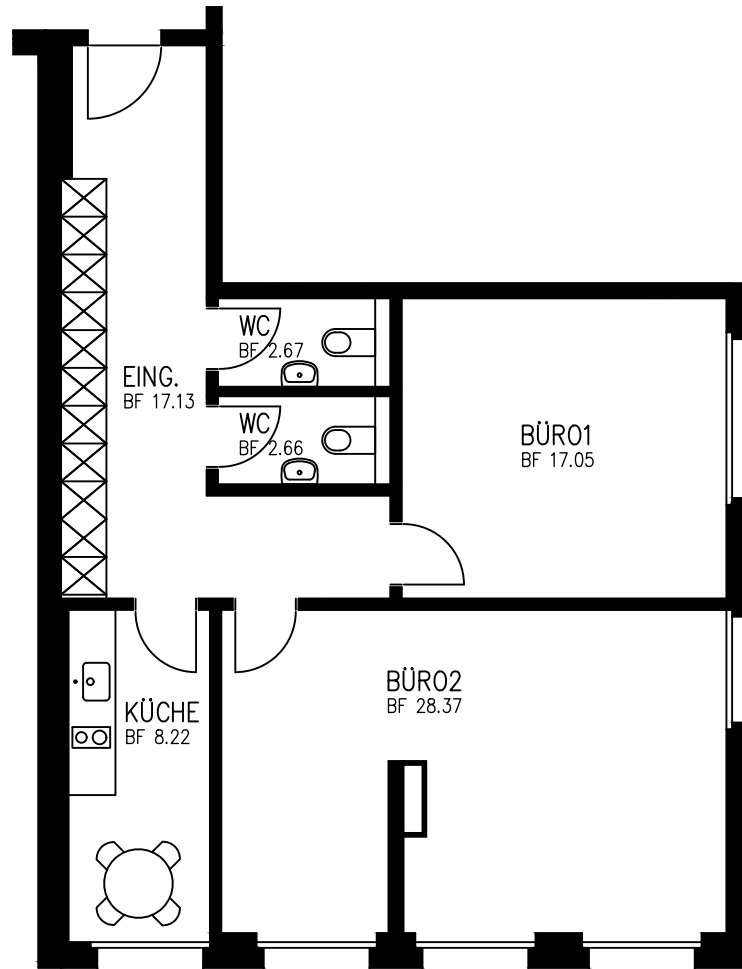
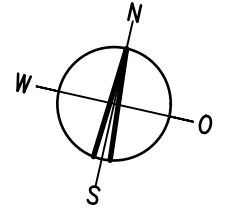


KELLER 1. ETAGE WEST



BÜRO 1.ETAGE OST

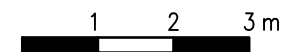
76.10 M2



–Rebmattlistr.–

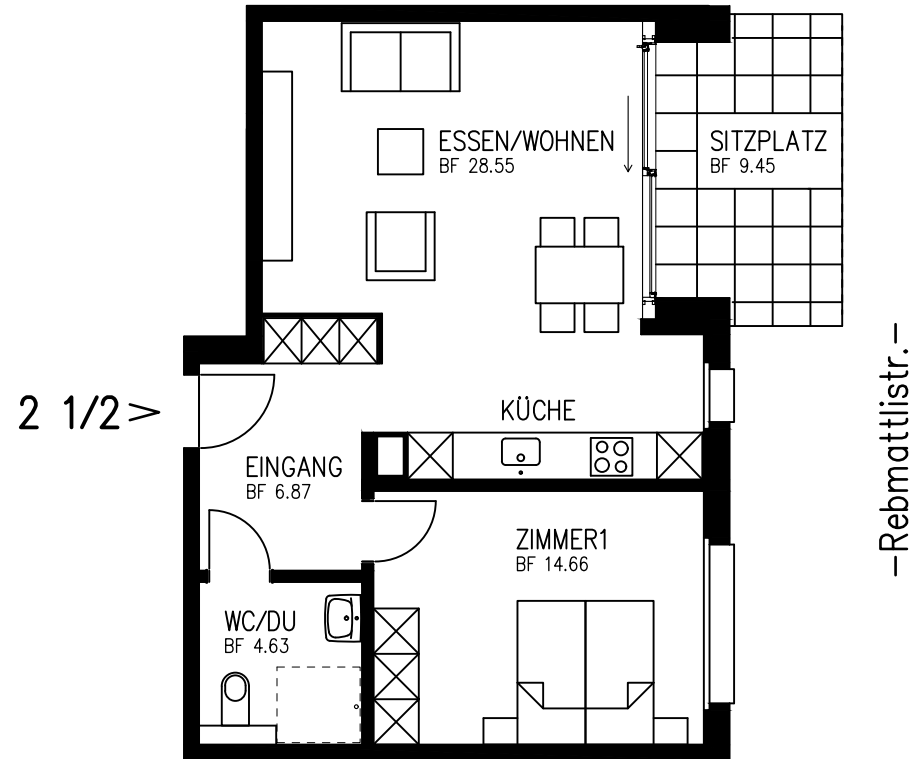
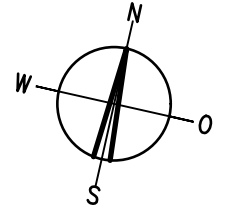
–Wilenstrasse–

0–01 **vermietet**

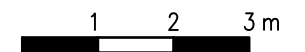


2½-ZIMMER-WOHNUNG 1.ETAGE OST

54.70 M2



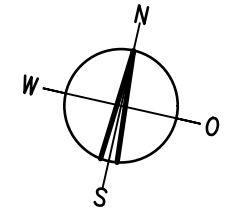
0-02



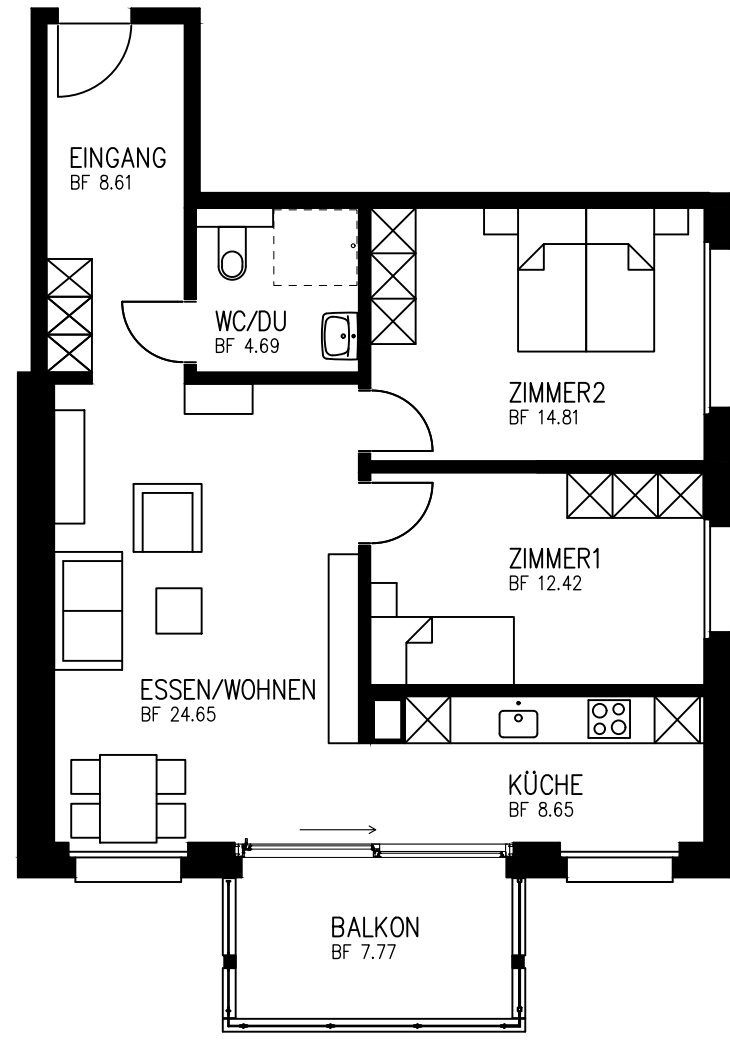
3½-ZIMMER-WOHNUNGEN

2./3./4.ETAGE OST

73.85 M2



3 1/2
V



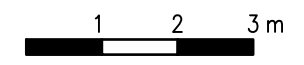
–Rebmattlstr.–

0–31 **vermietet**

0–21

0–11

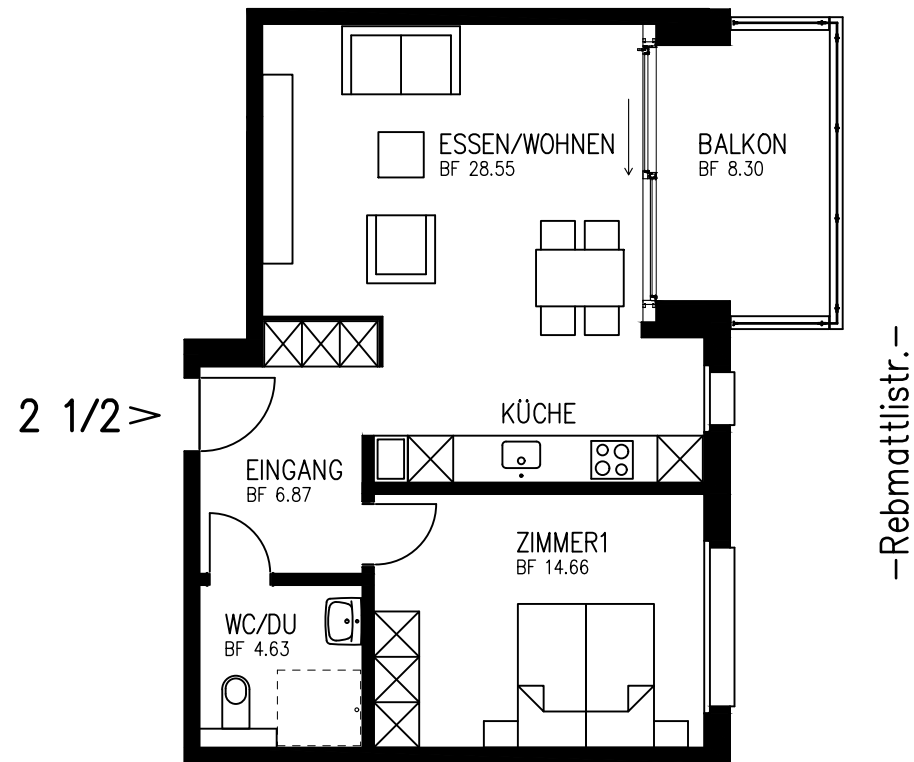
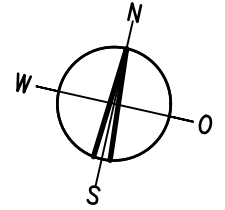
–Wilenstrasse–



2½-ZIMMER-WOHNUNGEN

2./3./4.ETAGE OST

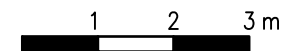
54.70 M2



0-32 vermietet

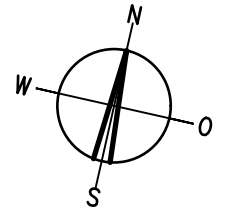
0-22 vermietet

0-12 vermietet

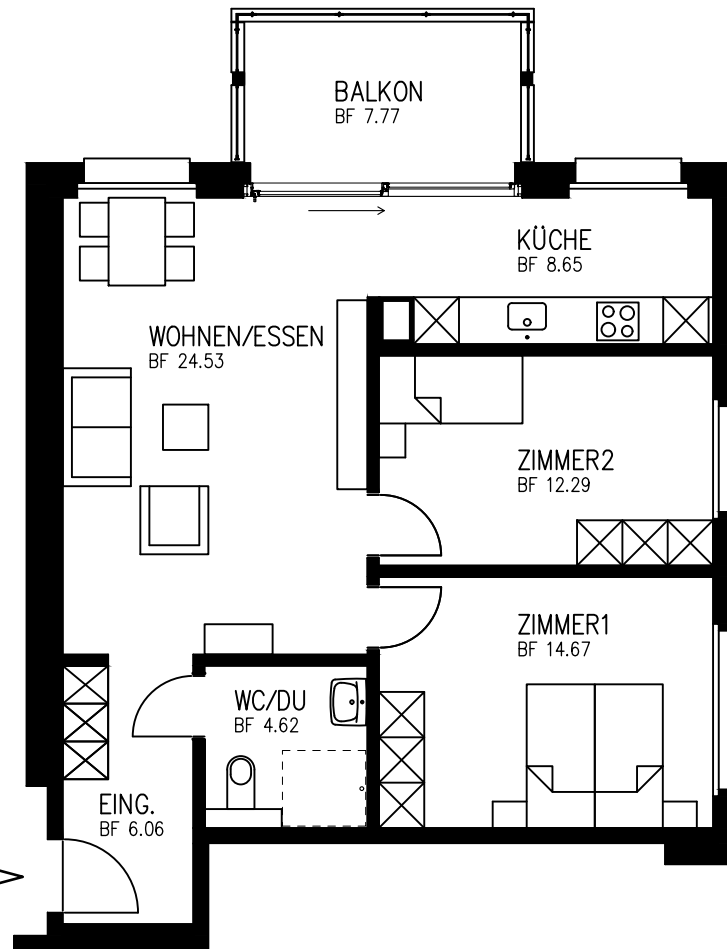


3½-ZIMMER-WOHNUNGEN 2./3./4.ETAGE OST

70.80 M2



–SOB–



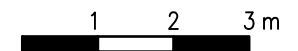
–Rebmattlstr.–

3 1/2 >

0–33 **vermietet**

0–23

0–13

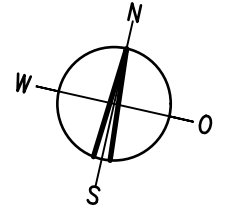
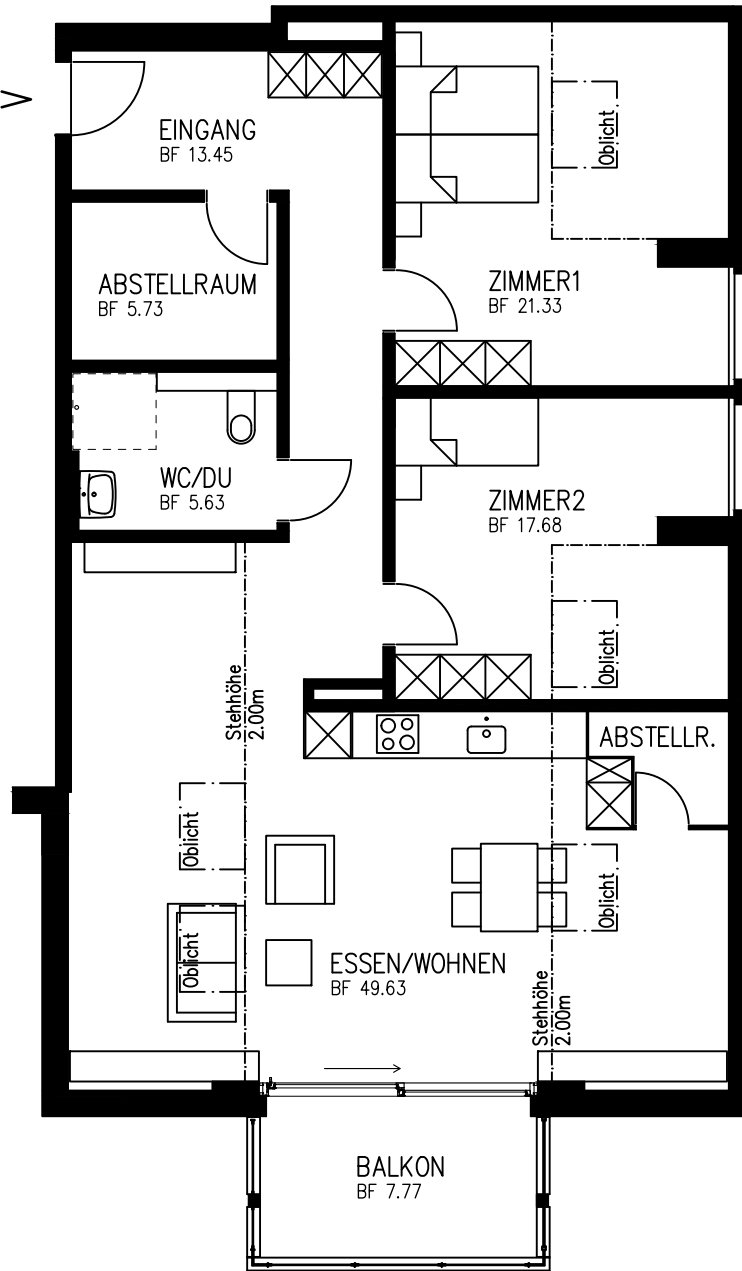


3½-ZIMMER-WOHNUNG

5.ETAGE OST

75.80 M2

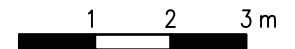
3 1/2 >



–Rebmattlstr.–

0-41 **vermietet**

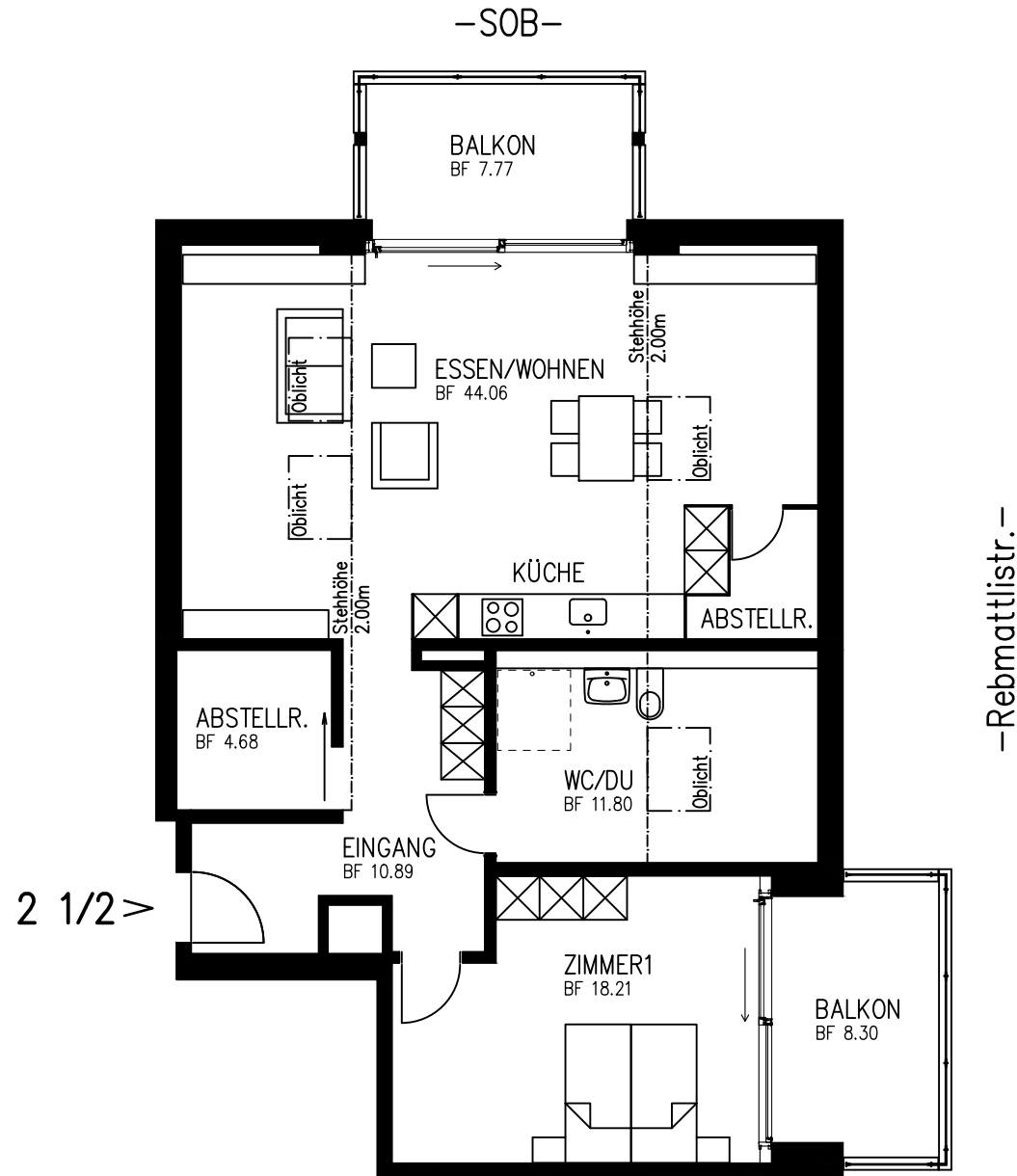
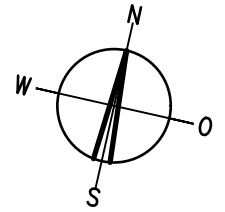
–Wilenstrasse–



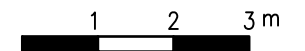
2½-ZIMMER-WOHNUNG

5. ETAGE OST

56.15 M²

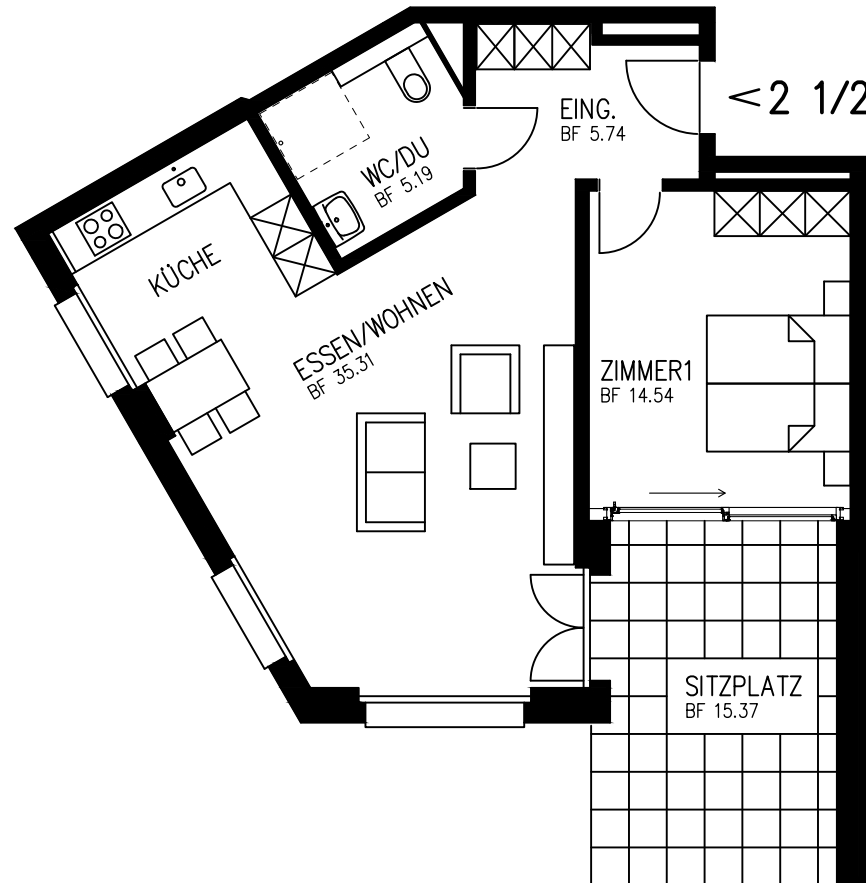
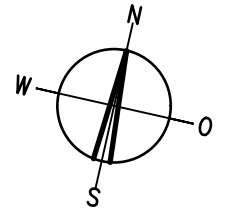


0-42 **vermietet**



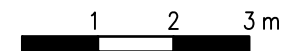
2½-ZIMMER-WOHNUNG 2.ETAGE WEST

60.80 M2



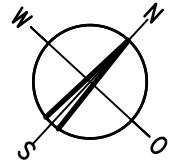
–Wilenstrasse–

W-01 **vermietet**

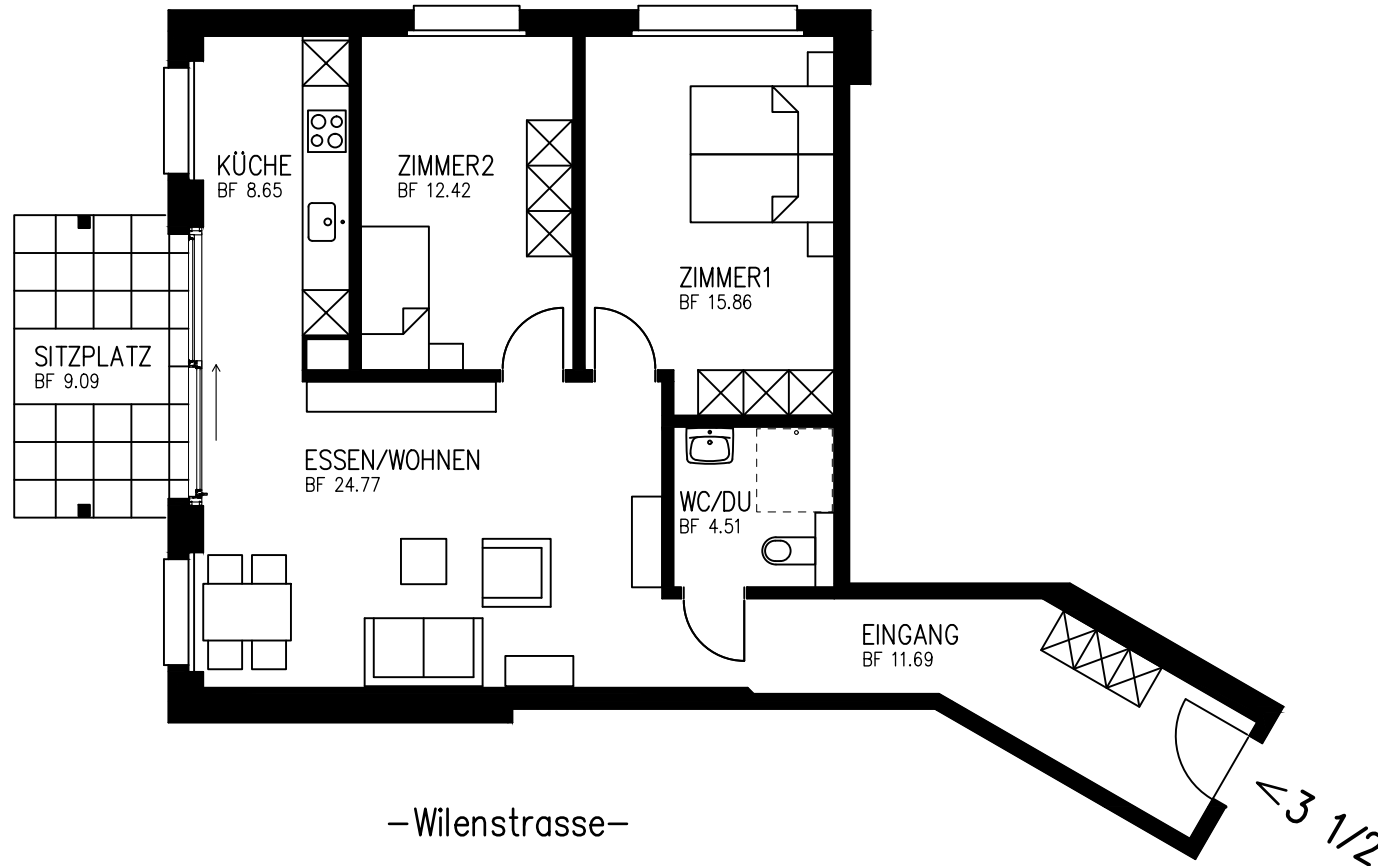


3½-ZIMMER-WOHNUNG 2.ETAGE WEST

77.90 M2

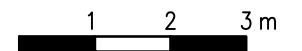


-Nachbar Schöb-Gmür-

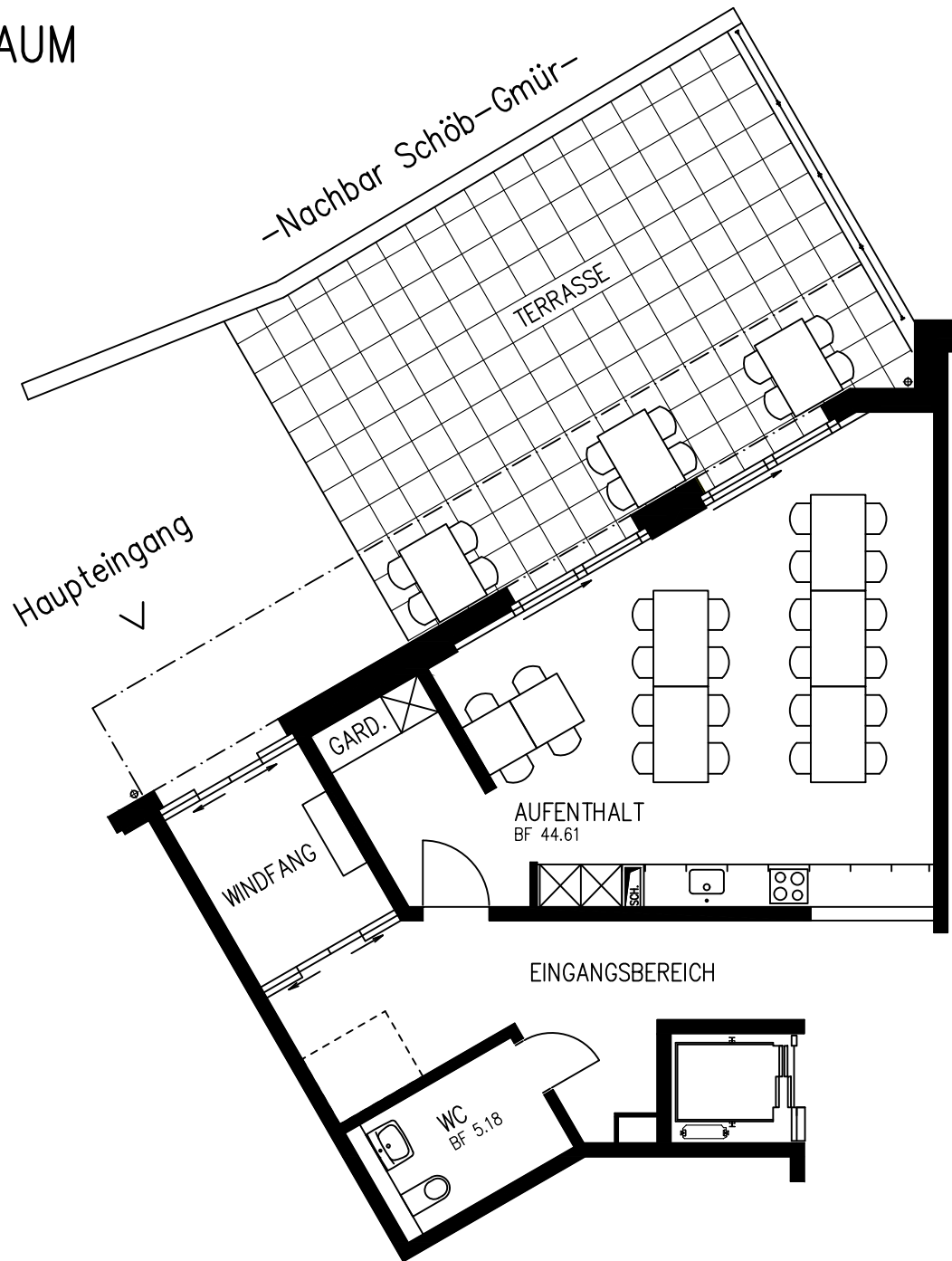
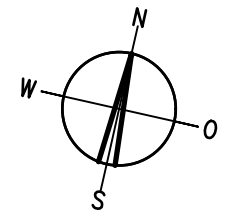


-Wilenstrasse-

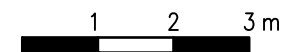
W-02



AUFENTHALTSRAUM
2. ETAGE WEST
44.60 M²

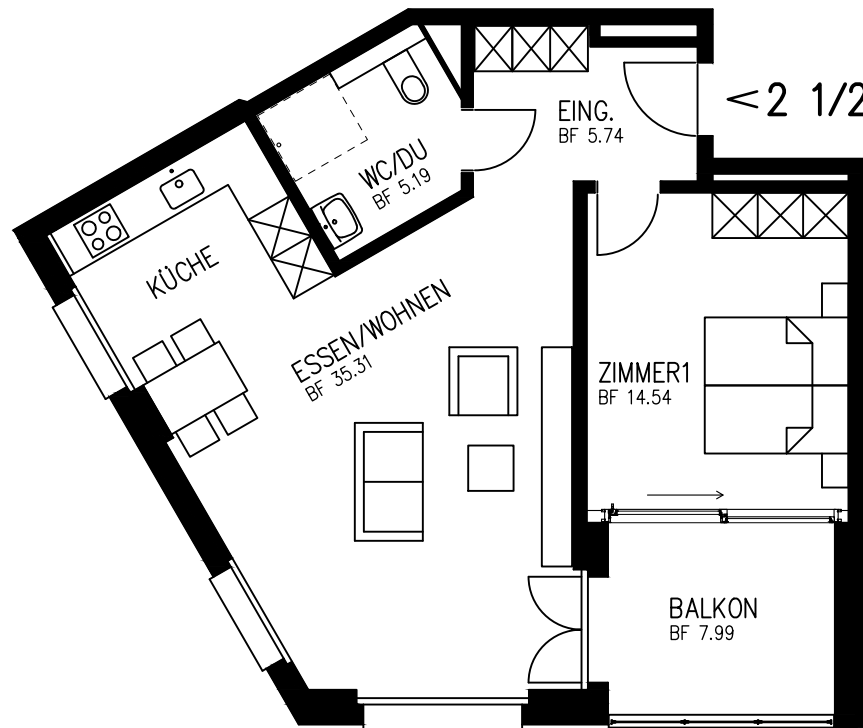
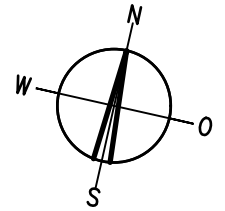


W-03



2½-ZIMMER-WOHNUNGEN 3./4.ETAGE WEST

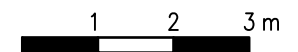
60.80 M2



–Wilenstrasse–

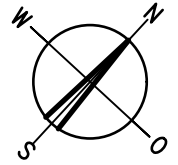
W-21 vermietet

W-11 vermietet

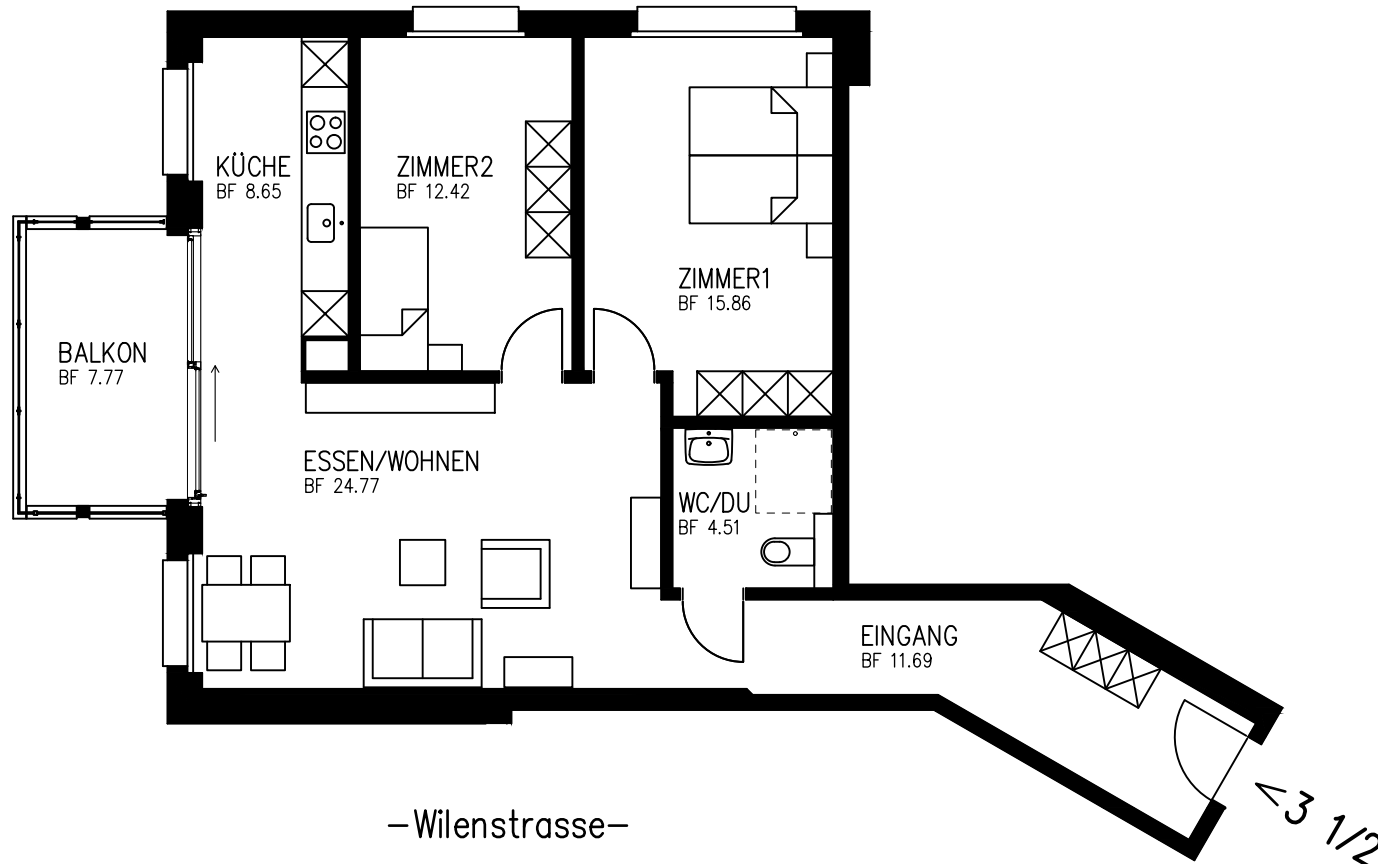


3½-ZIMMER-WOHNUNGEN 3./4.ETAGE WEST

77.90 M2



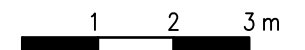
–Nachbar Schöb–Gmür–



–Wilenstrasse–

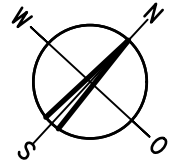
W-22

W-12

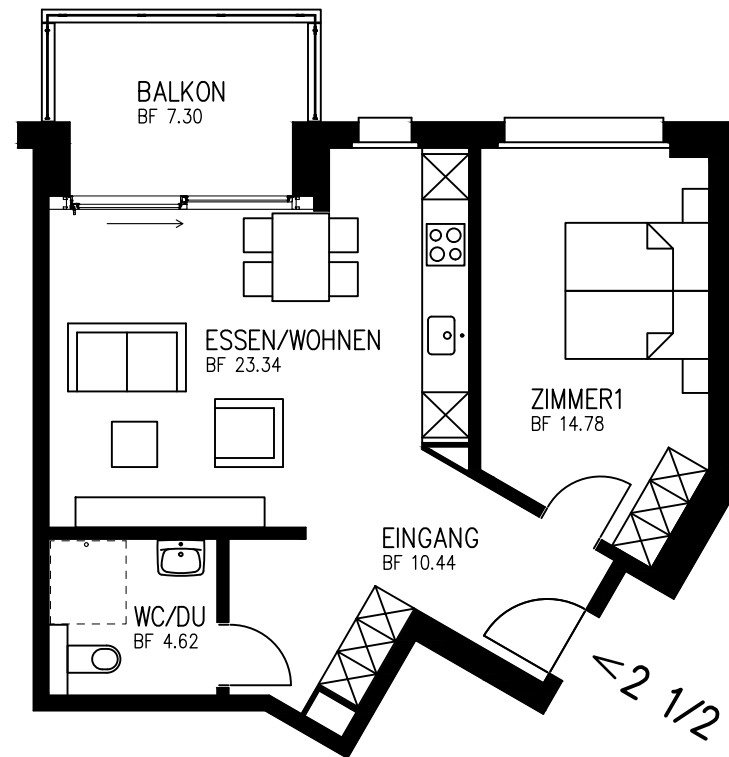


2½-ZIMMER-WOHNUNGEN 3./4./5.ETAGE WEST

53.20 M2



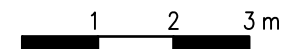
–Nachbar Schöb–Gmür–



W-33

W-23

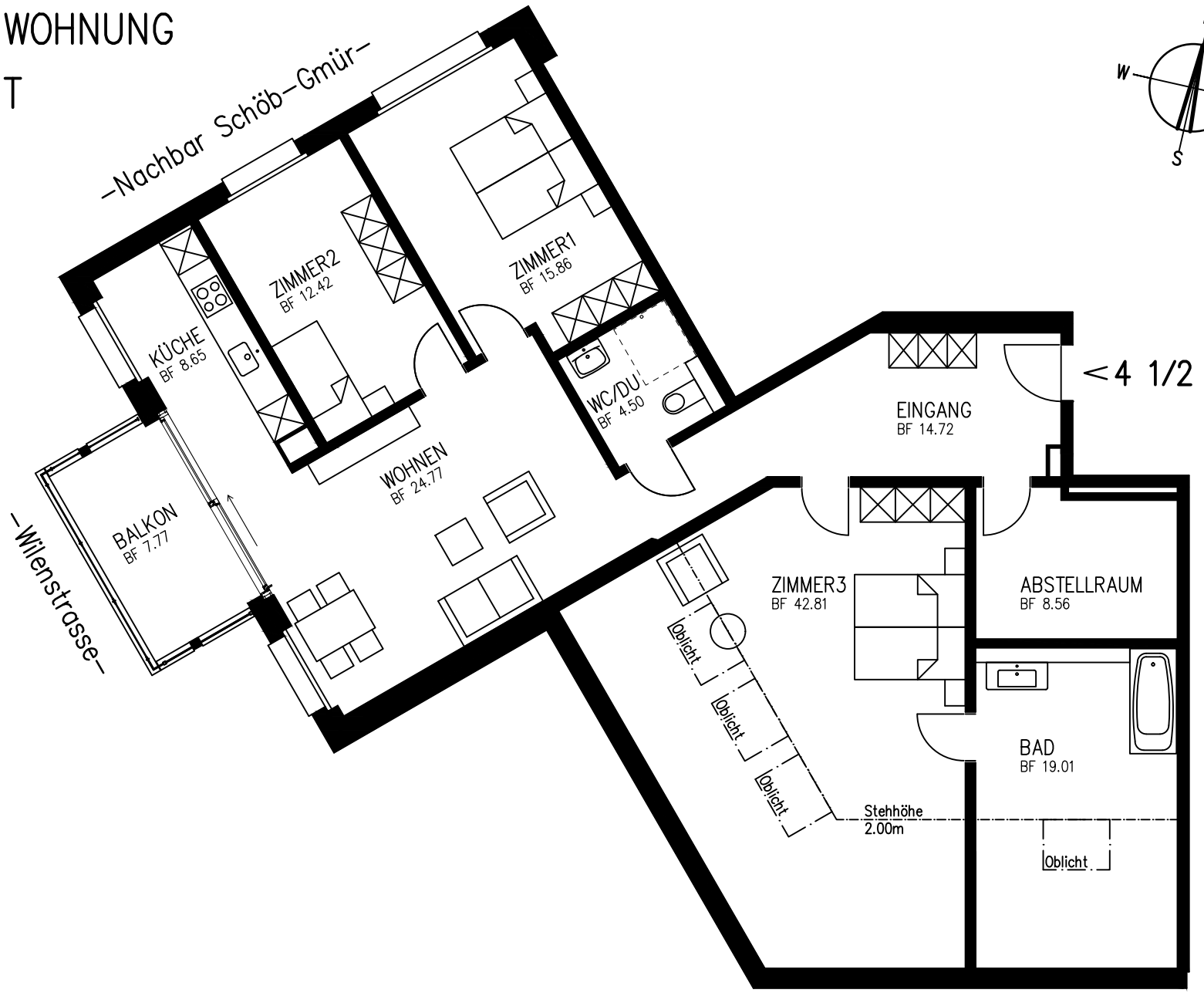
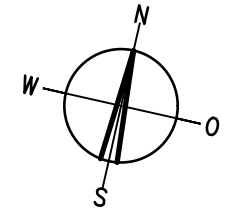
W-13 vermietet



4½-ZIMMER-WOHNUNG

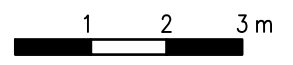
5. ETAGE WEST

120.60 M²



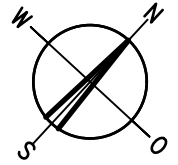
W-31

- Wilenstrasse -

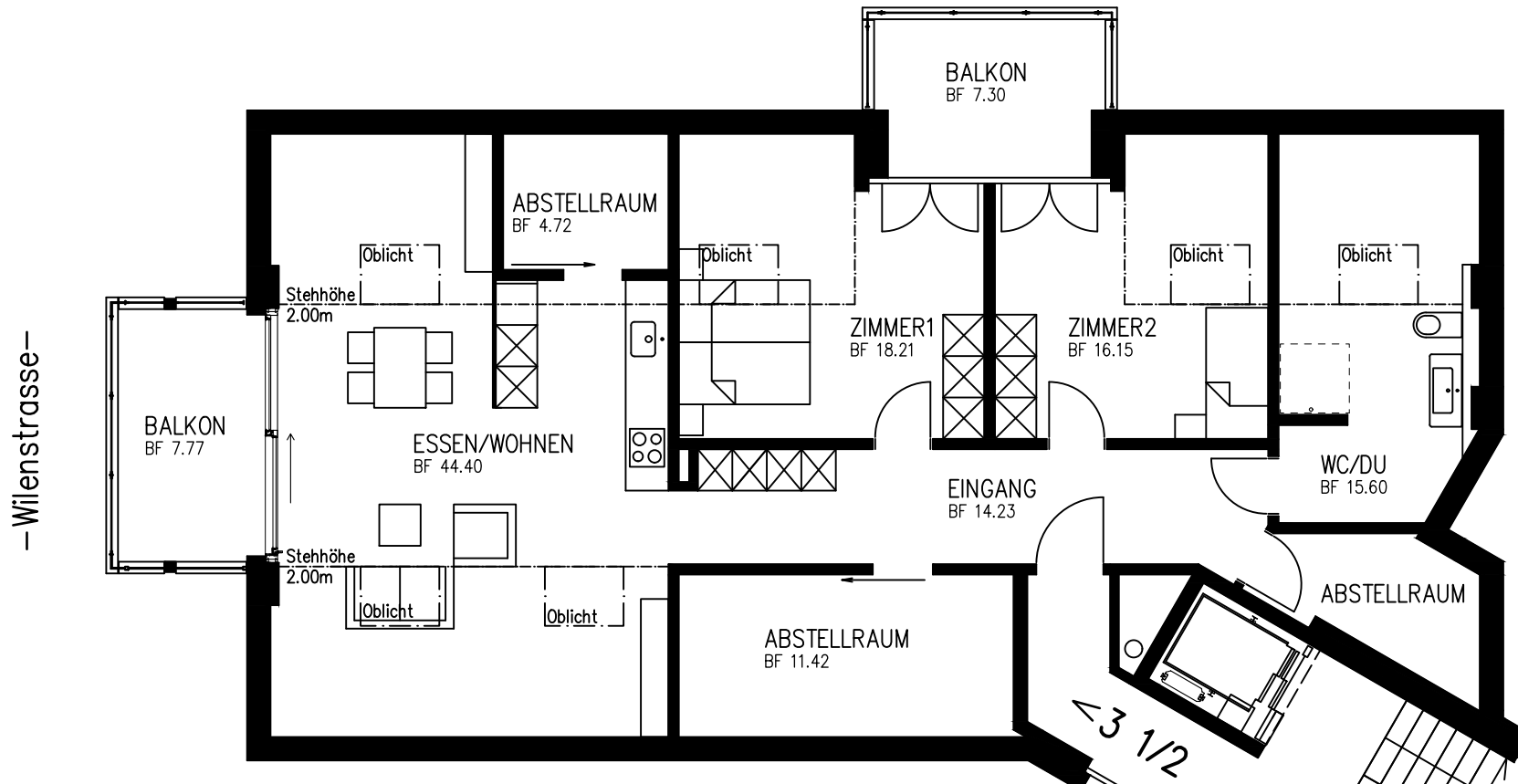


3½-ZIMMER-WOHNUNG 6.ETAGE WEST

67.00 M2



–Nachbar Schöb–Gmür–



W-41

