



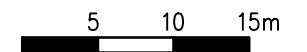
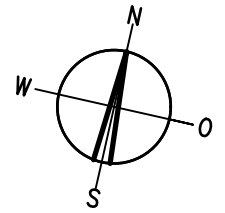
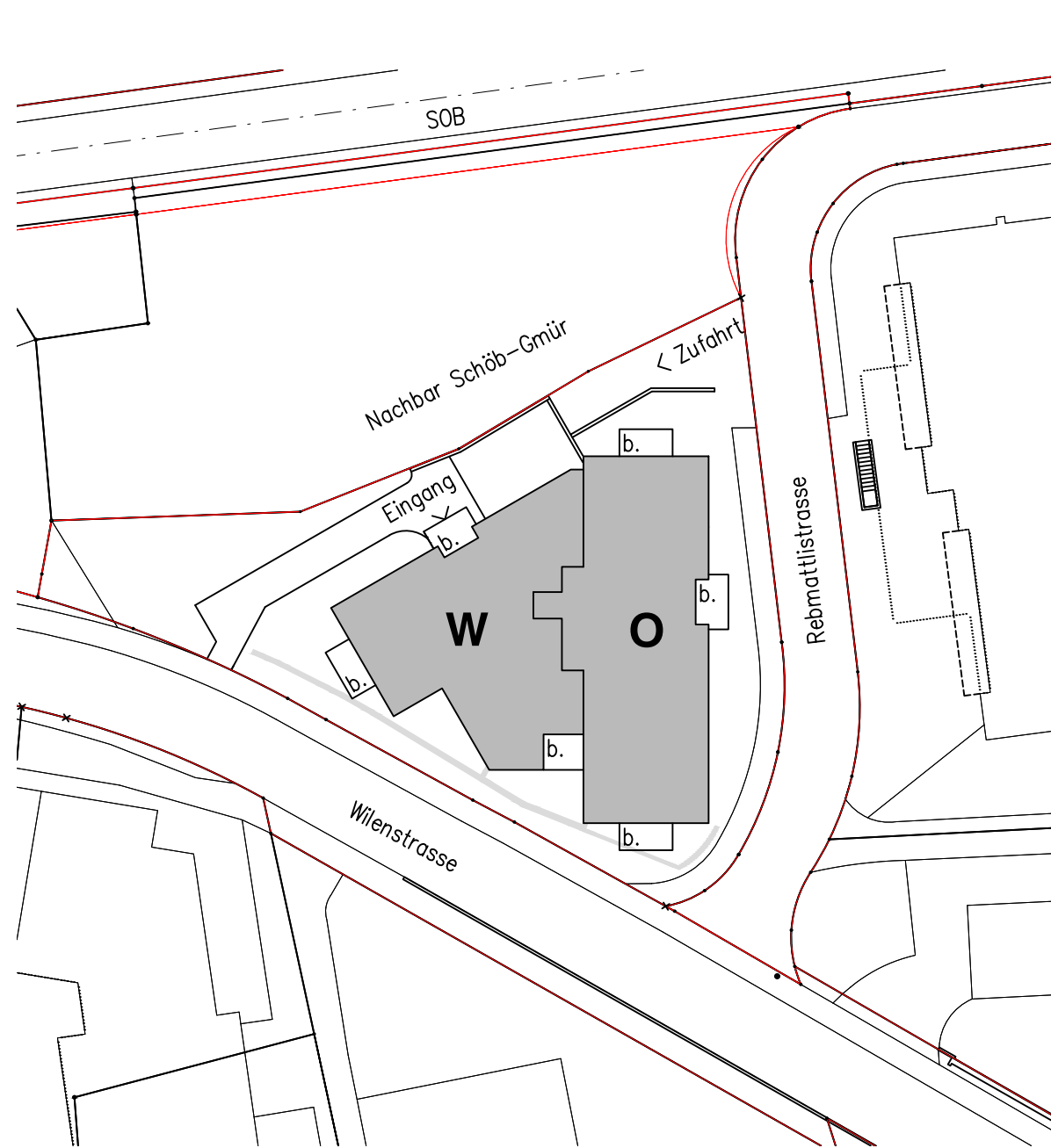
Neubau Genossenschaft für Alterswohnungen

## «Rebmattli» Wilen SZ

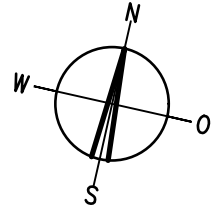
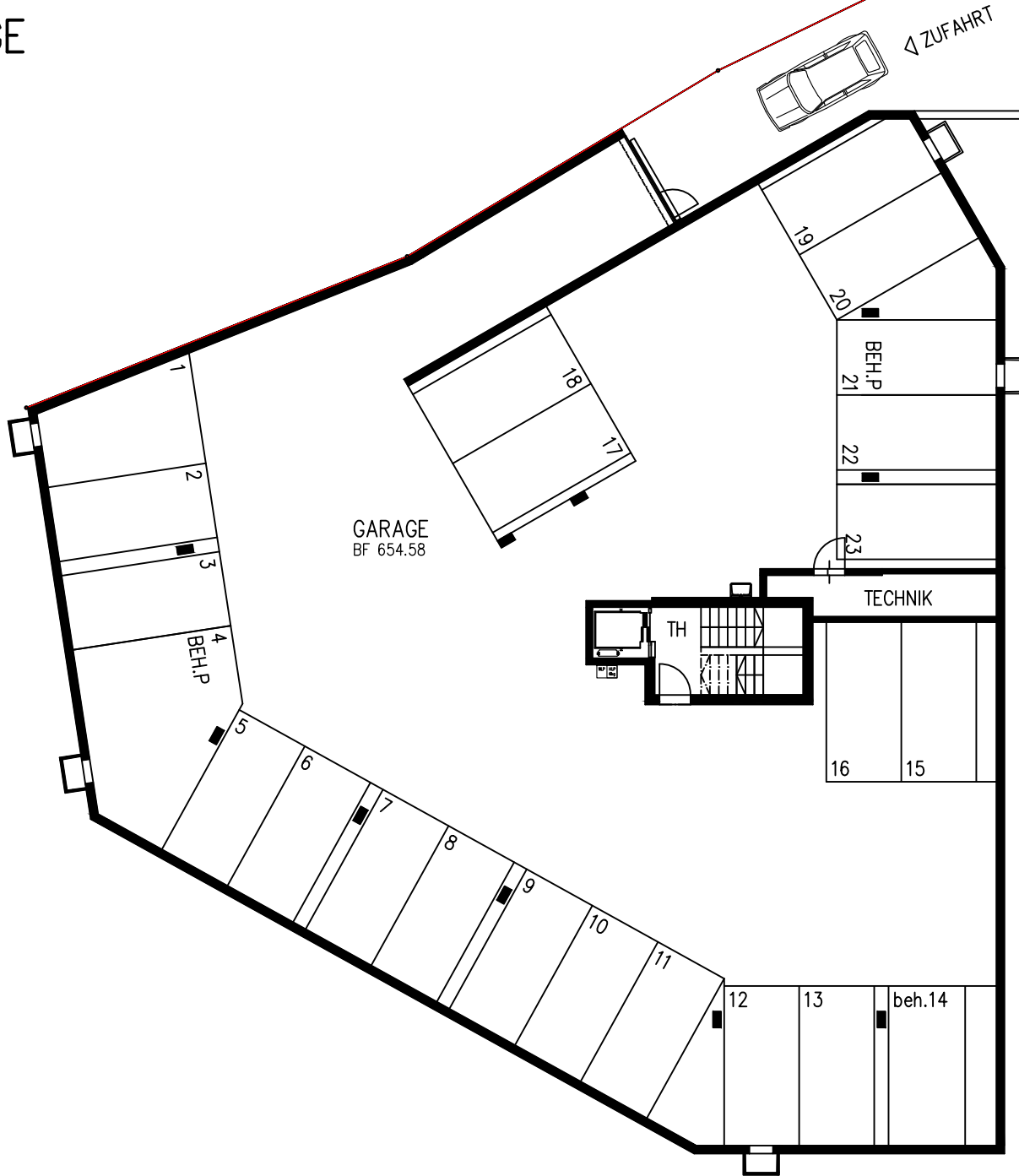


**Unterlagen für Mietinteressenten**

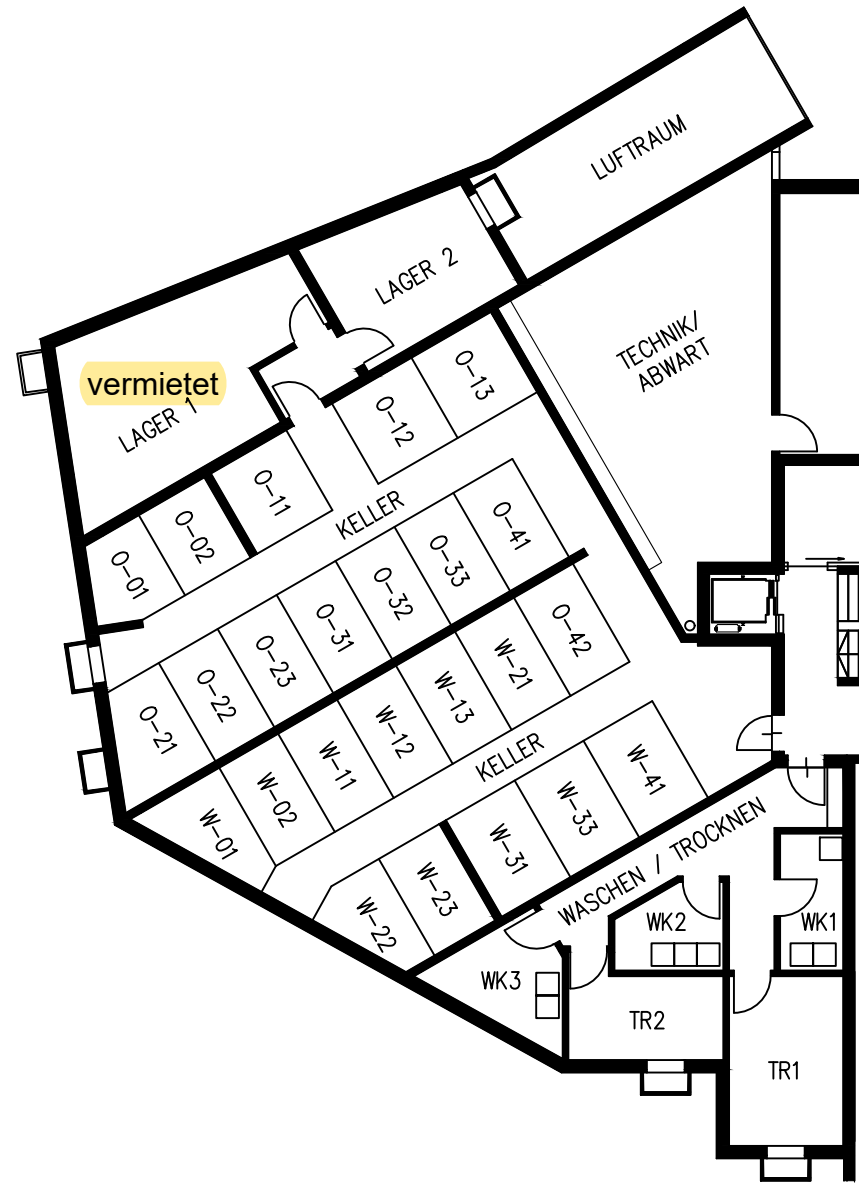
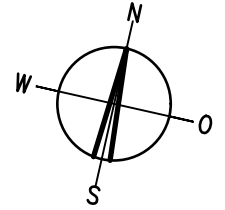
# Situation



# TIEFGARAGE

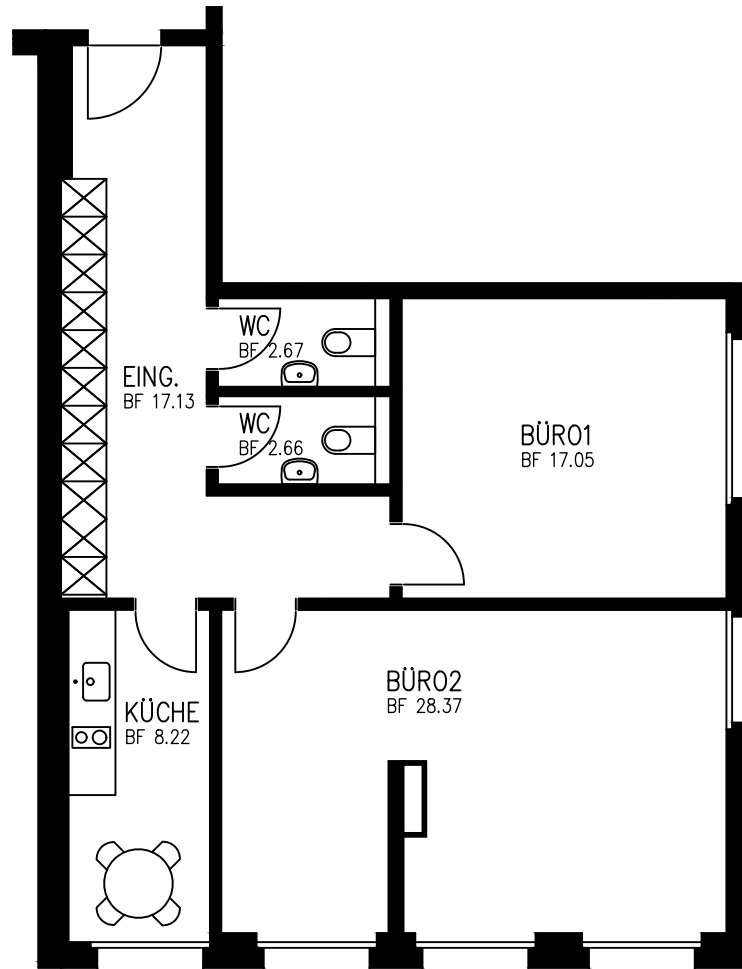
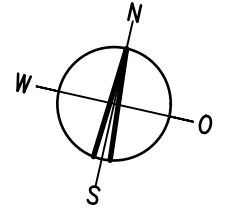


# KELLER 1. ETAGE WEST



# BÜRO 1.ETAGE OST

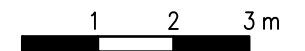
76.10 M2



–Rebmattlistr.–

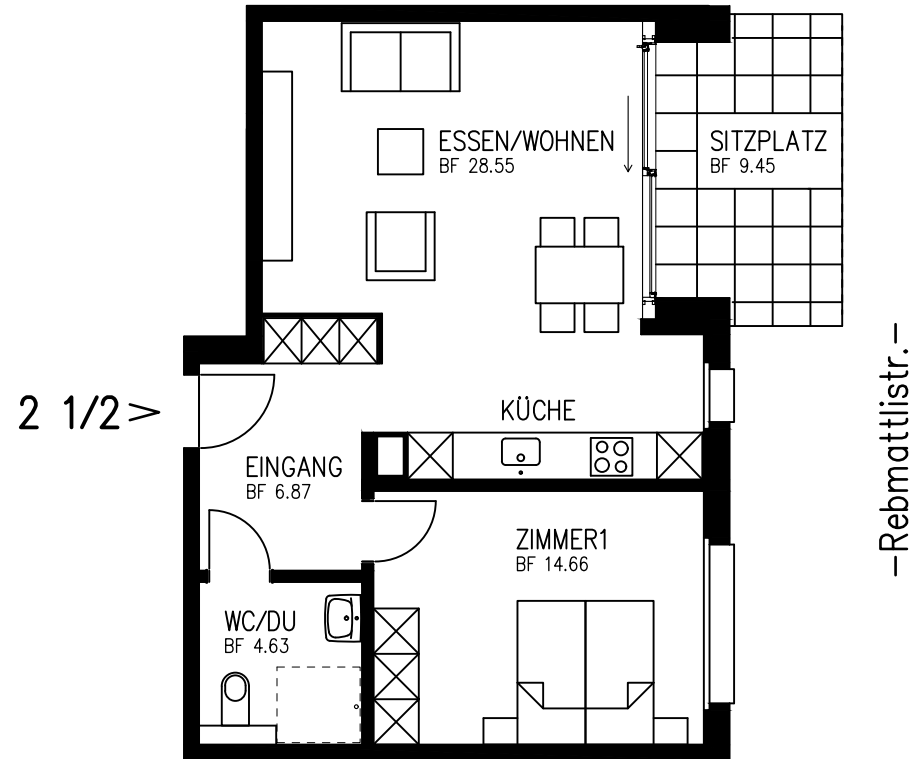
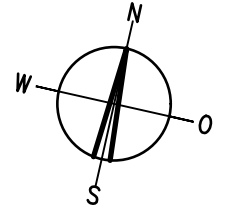
–Wilenstrasse–

0–01 **vermietet**

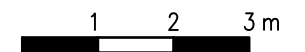


2½-ZIMMER-WOHNUNG 1.ETAGE OST

54.70 M2



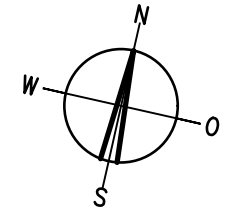
0-02 **vermietet**



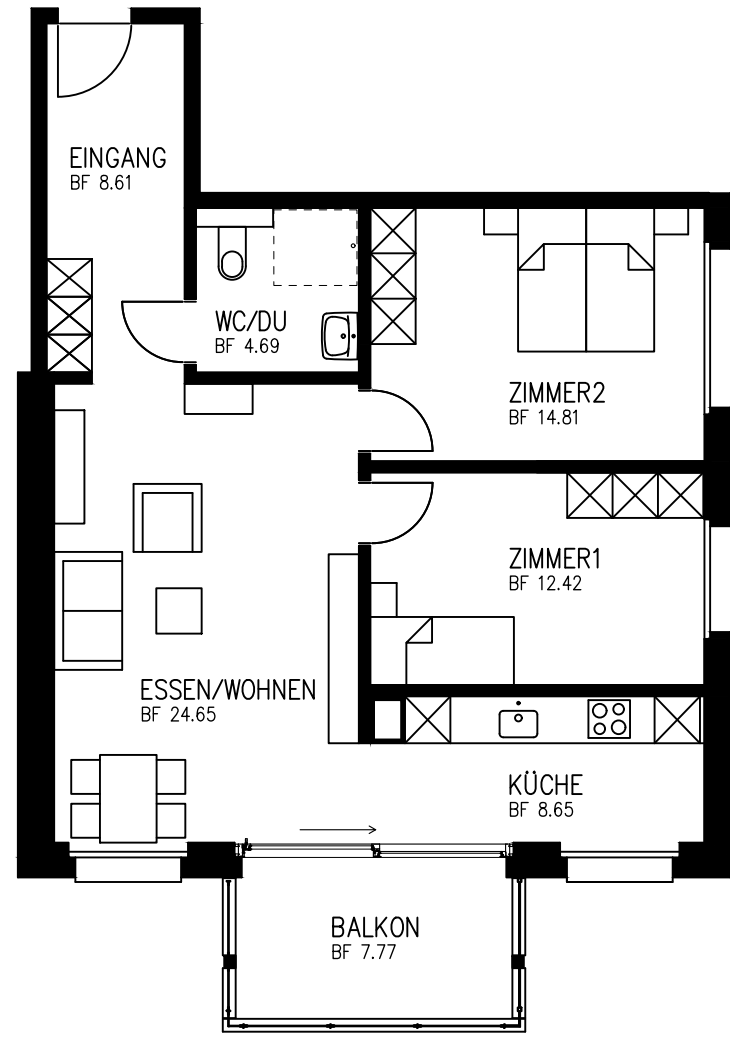
# 3½-ZIMMER-WOHNUNGEN

# 2./3./4.ETAGE OST

73.85 M2



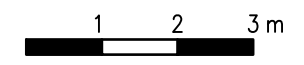
3 1/2  
V



–Rebmattlstr.–

- 0–31 vermietet
- 0–21 vermietet
- 0–11 vermietet

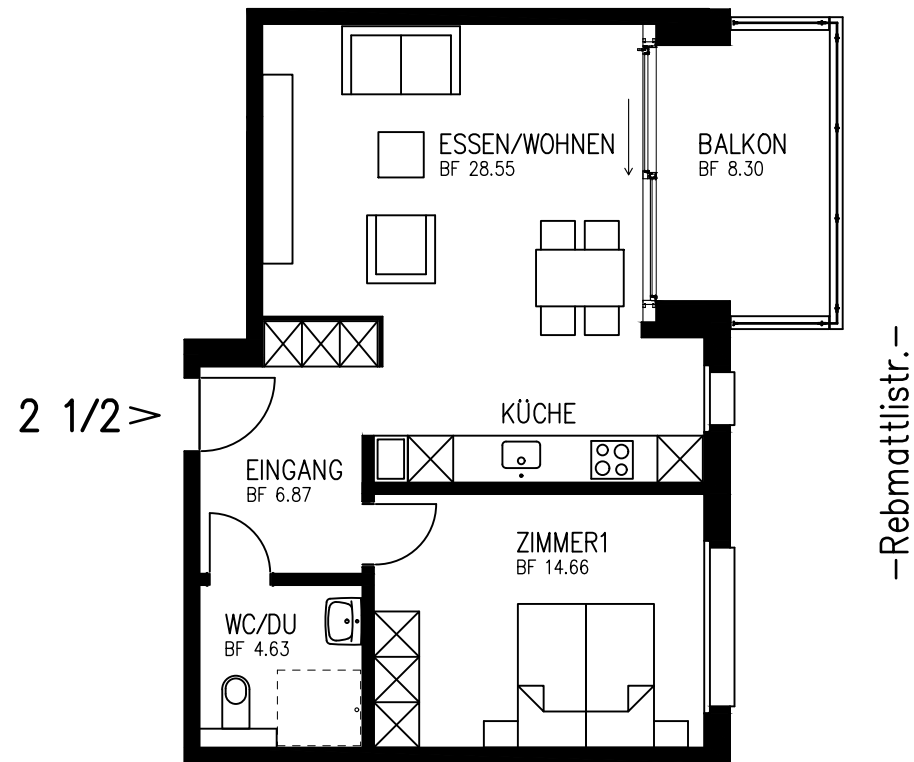
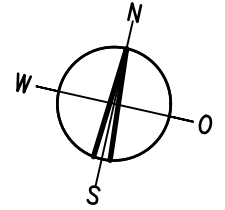
–Wilenstrasse–



# 2½-ZIMMER-WOHNUNGEN

# 2./3./4.ETAGE OST

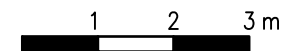
54.70 M2



0-32 vermietet

0-22 vermietet

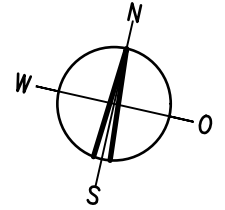
0-12 vermietet



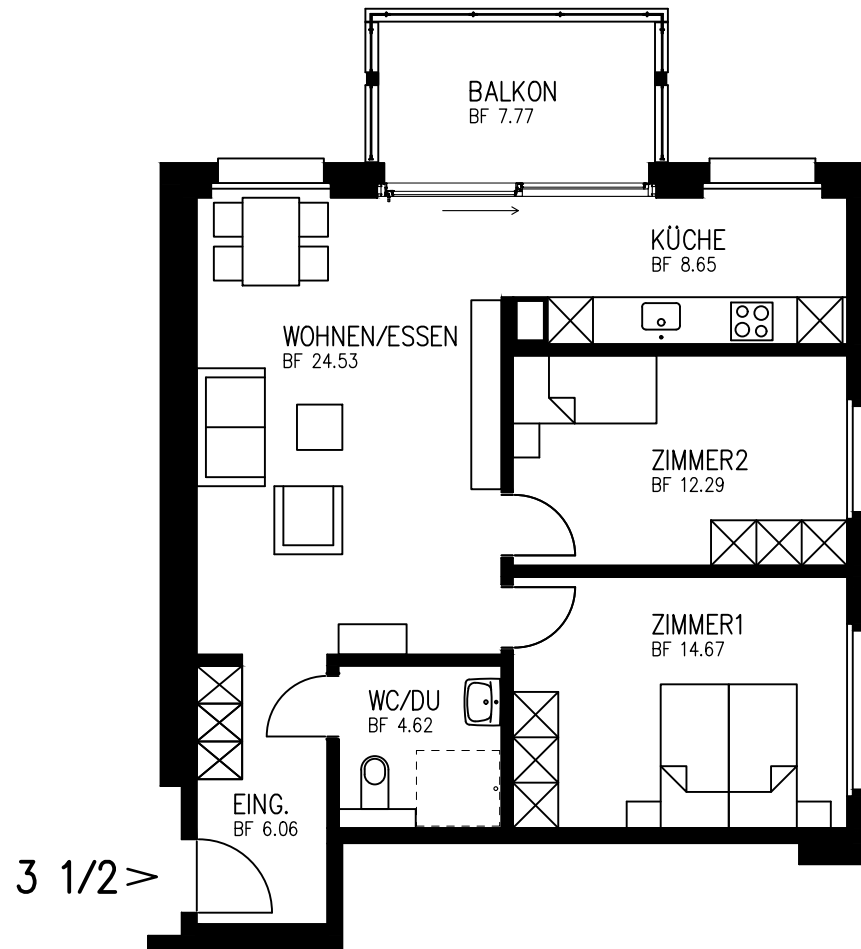


# 3½-ZIMMER-WOHNUNGEN 2./3./4.ETAGE OST

70.80 M2



–SOB–

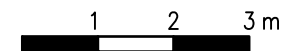


–Rebmattlstr.–

0–33 vermietet

0–23 vermietet

0–13 vermietet

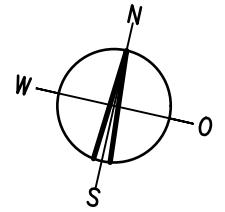
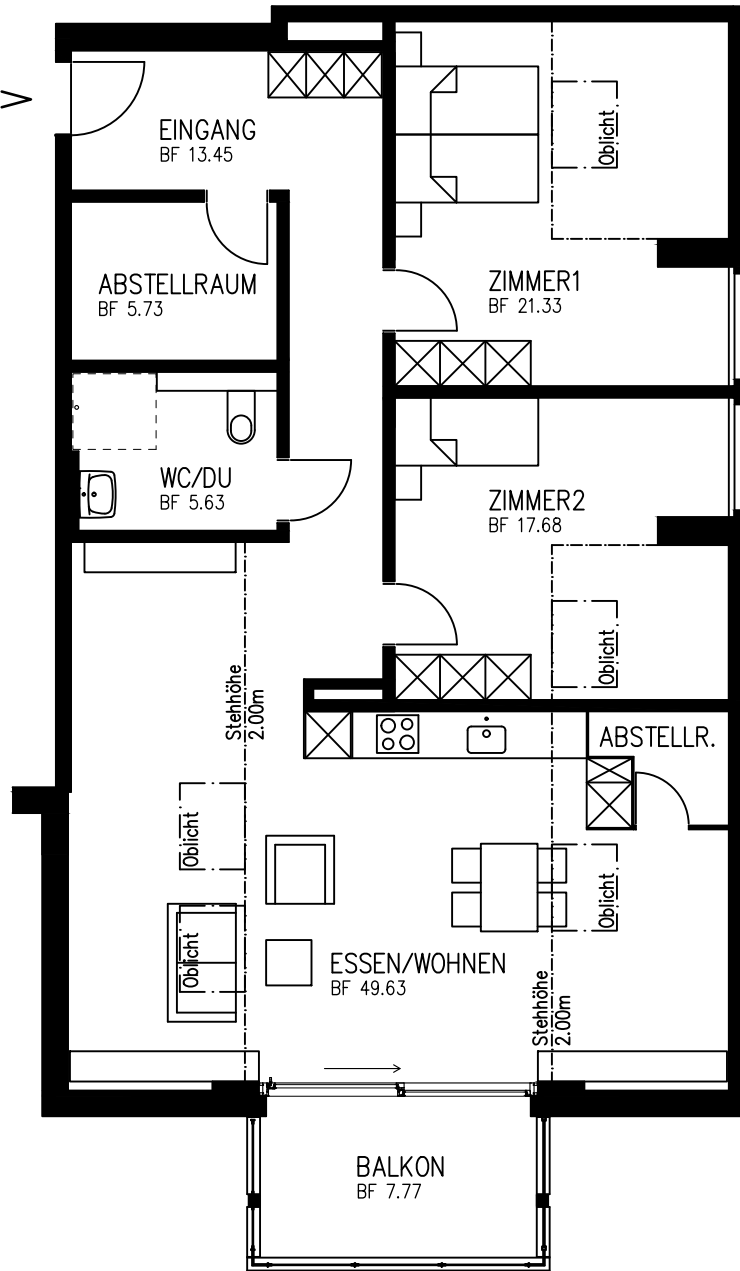


# 3½-ZIMMER-WOHNUNG

5.ETAGE OST

75.80 M2

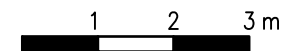
3 1/2 >



–Rebmattlstr.–

0-41 **vermietet**

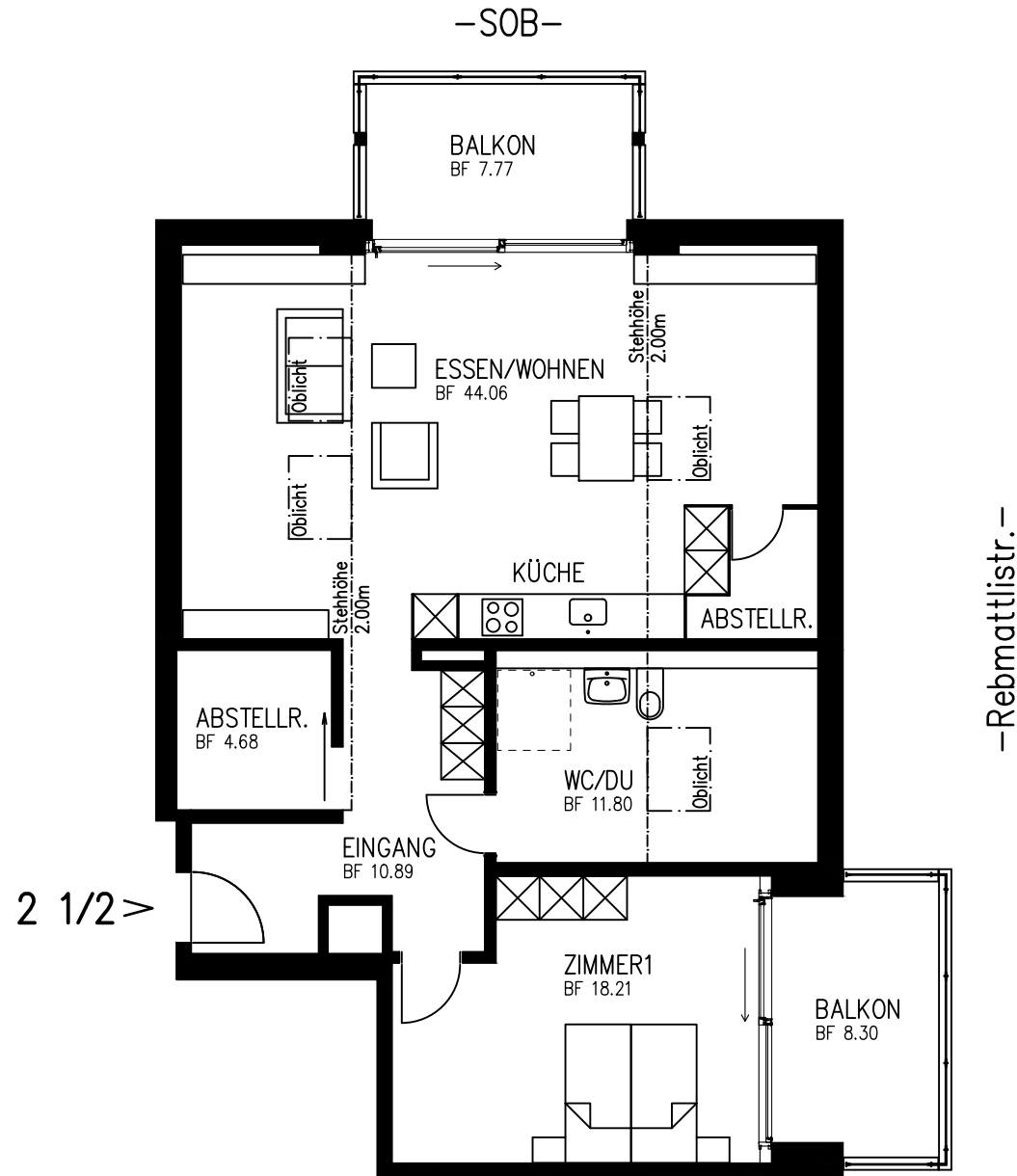
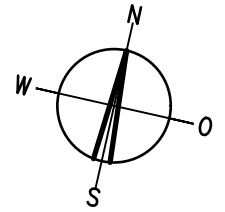
–Wilenstrasse–



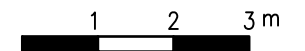
2½-ZIMMER-WOHNUNG

5.ETAGE OST

56.15 M2

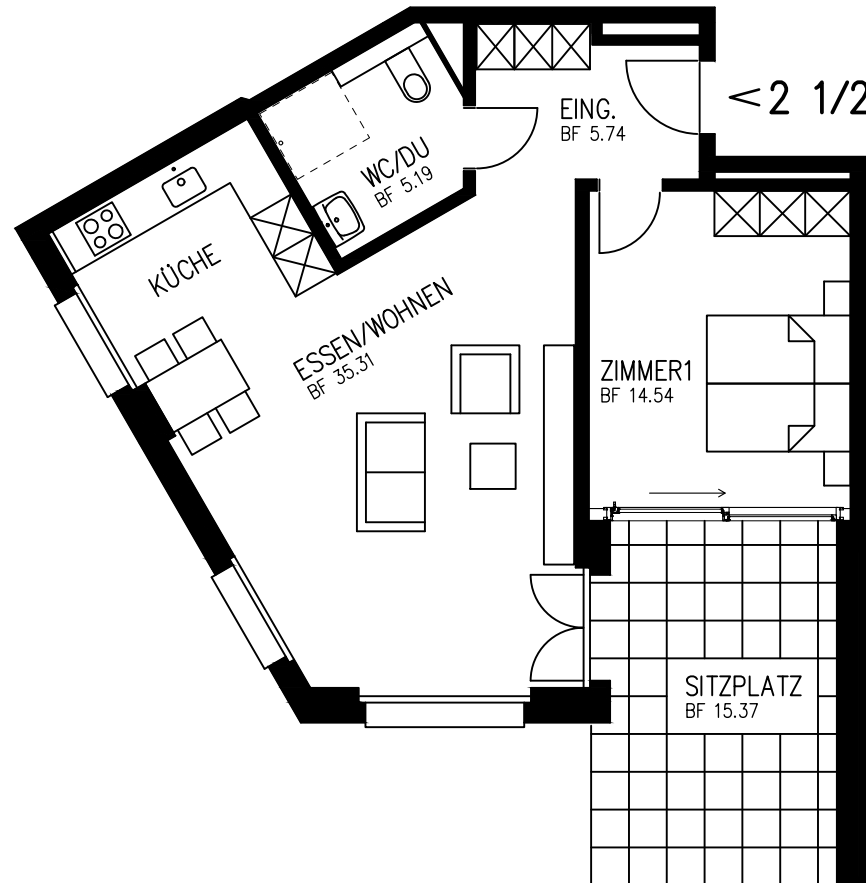
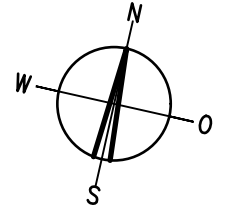


0-42 **vermietet**



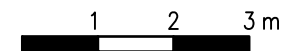
2½-ZIMMER-WOHNUNG 2.ETAGE WEST

60.80 M2



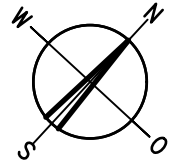
–Wilenstrasse–

W-01 **vermietet**

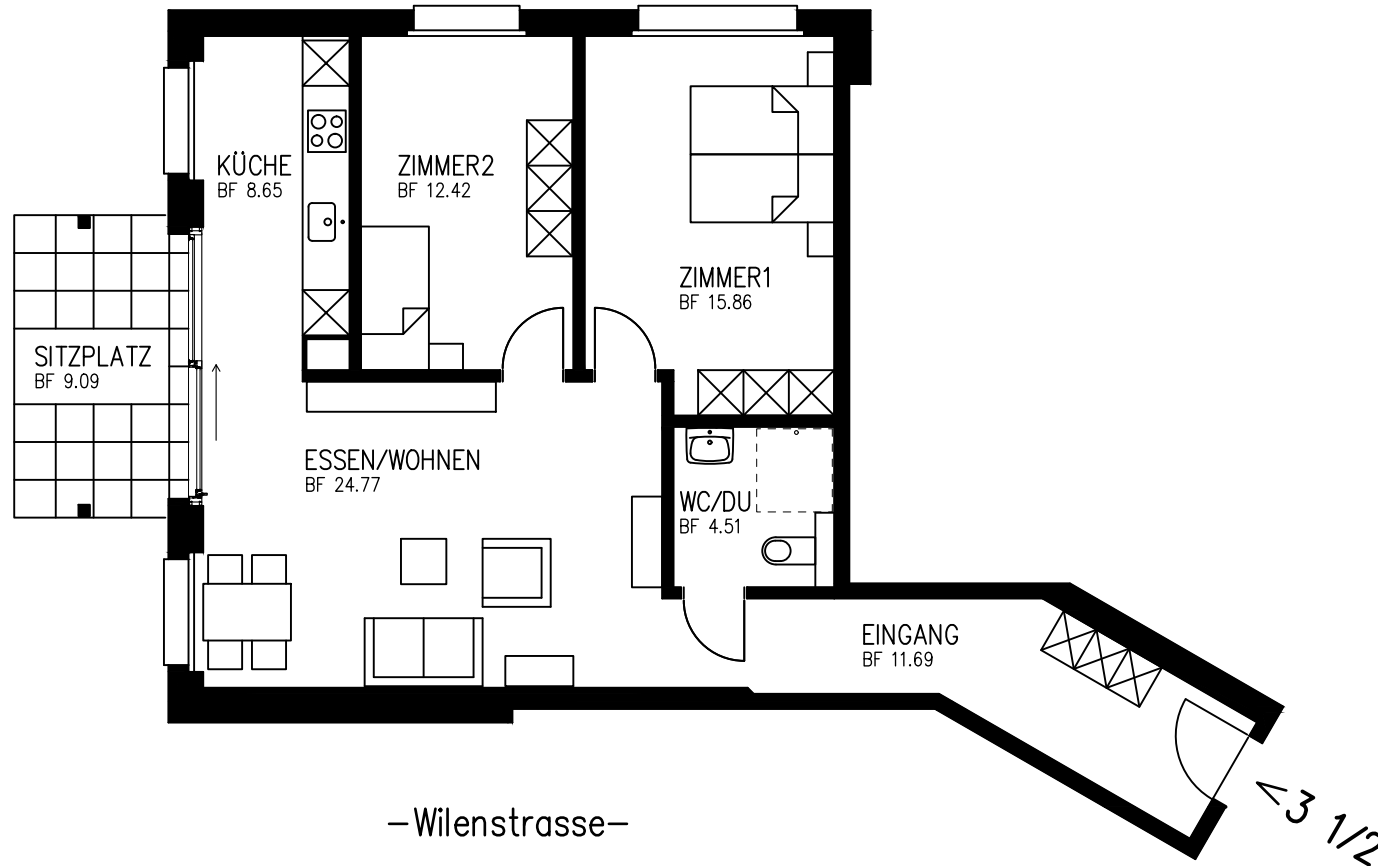


# 3½-ZIMMER-WOHNUNG 2.ETAGE WEST

77.90 M2

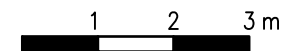


–Nachbar Schöb–Gmür–

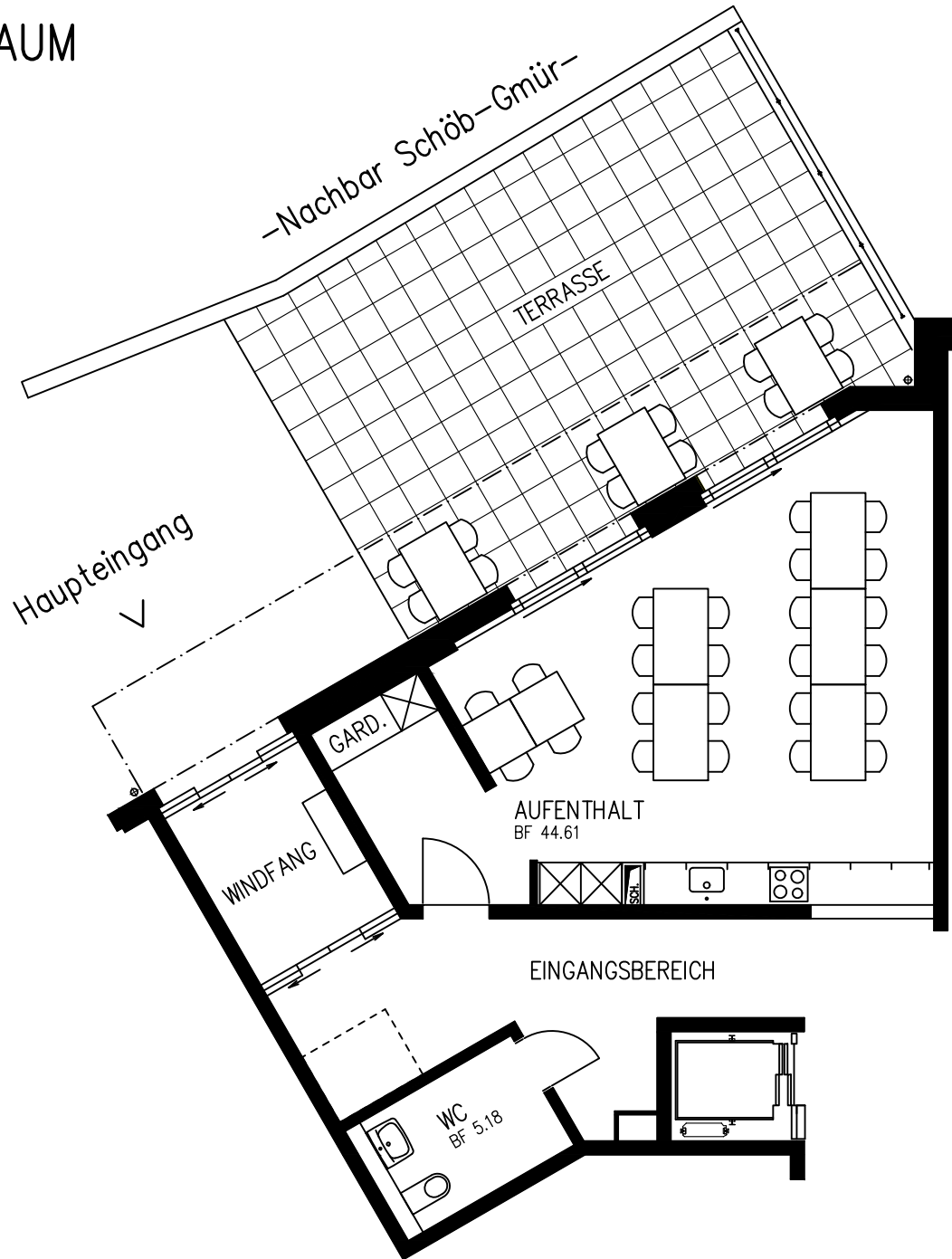
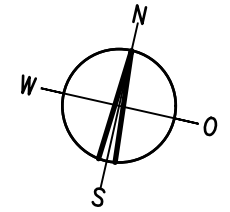


–Wilenstrasse–

W-02 **vermietet**



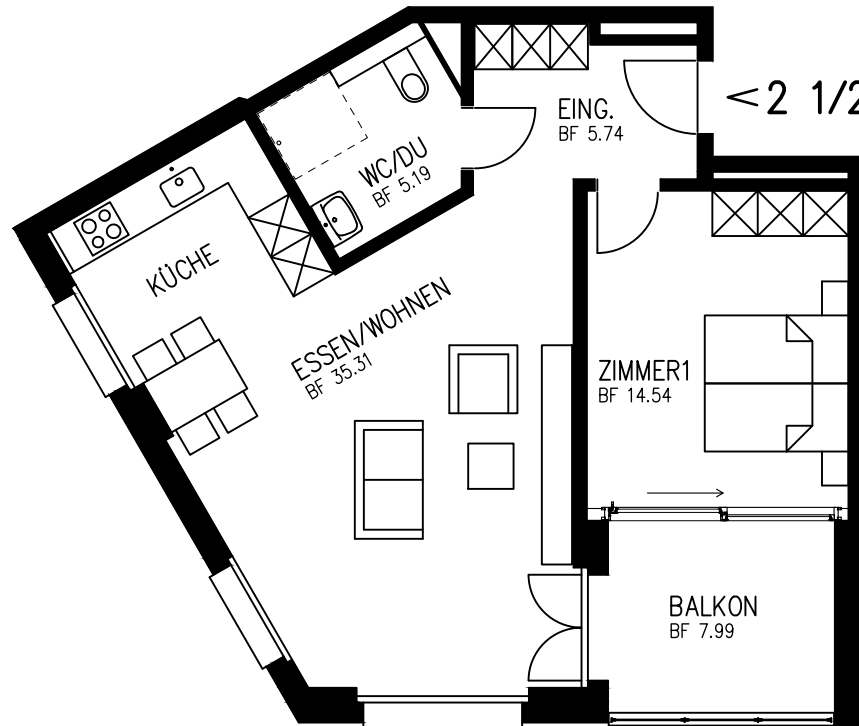
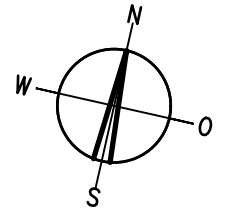
AUFENTHALTSRAUM  
2. ETAGE WEST  
44.60 M<sup>2</sup>



W-03

2½-ZIMMER-WOHNUNGEN 3./4.ETAGE WEST

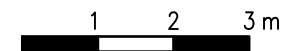
60.80 M2



–Wilenstrasse–

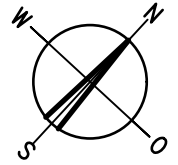
W-21 vermietet

W-11 vermietet

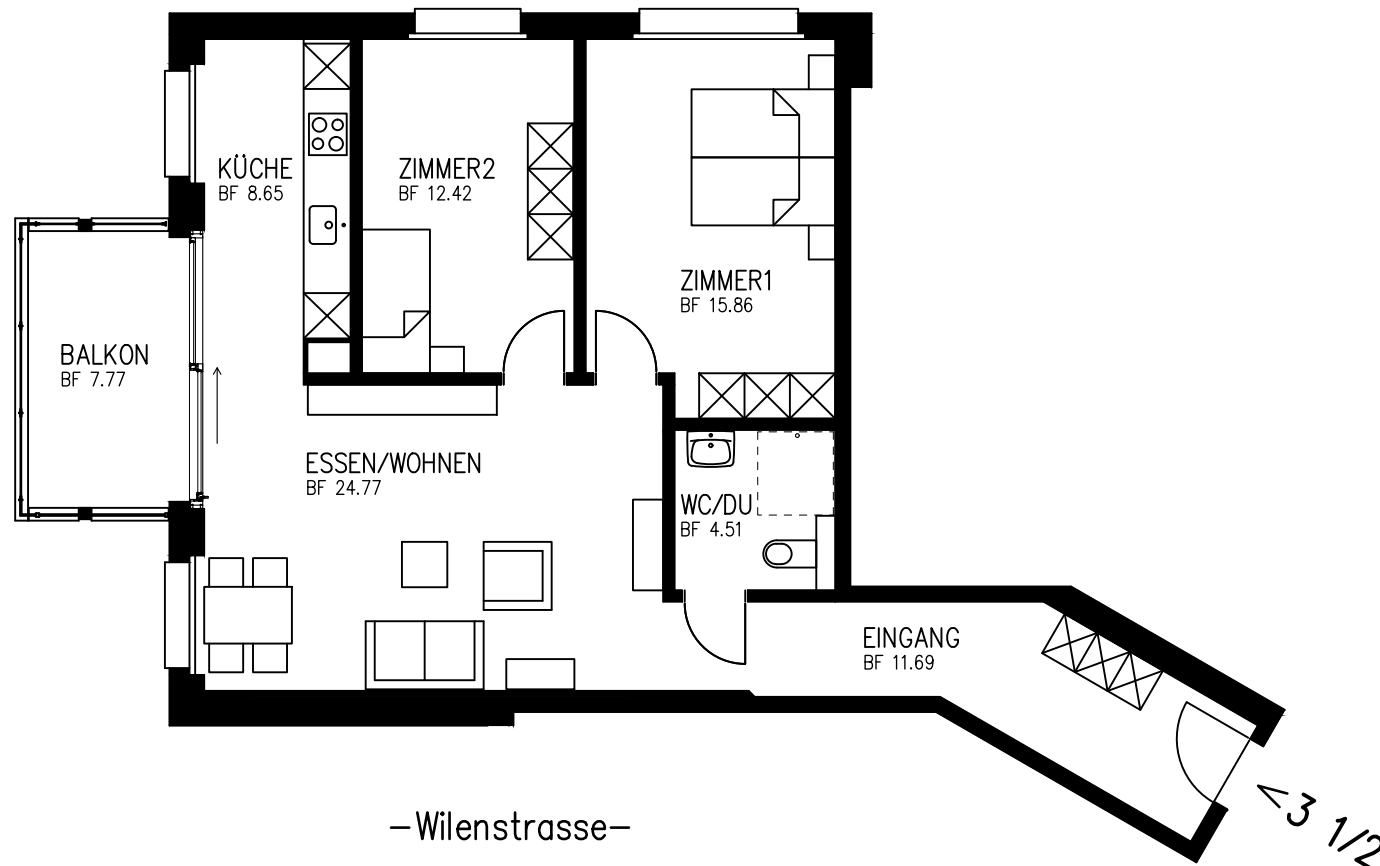


# 3½-ZIMMER-WOHNUNGEN 3./4.ETAGE WEST

77.90 M2



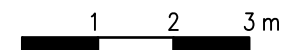
–Nachbar Schöb–Gmür–



–Wilenstrasse–

W-22 **vermietet**

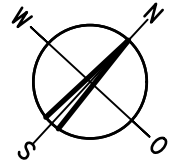
W-12 **vermietet**



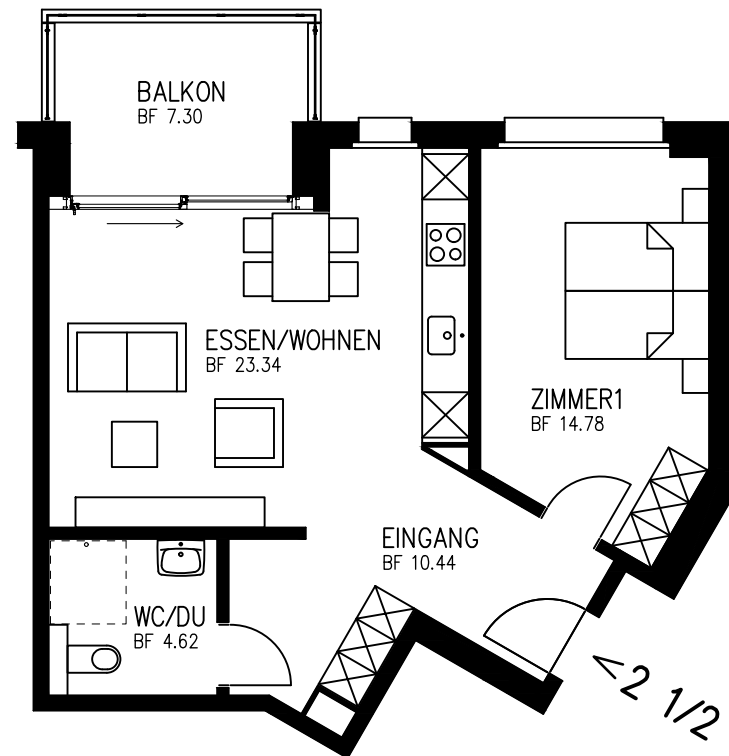


2½-ZIMMER-WOHNUNGEN 3./4./5.ETAGE WEST

53.20 M2



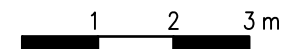
–Nachbar Schöb–Gmür–



W-33 vermietet

W-23 vermietet

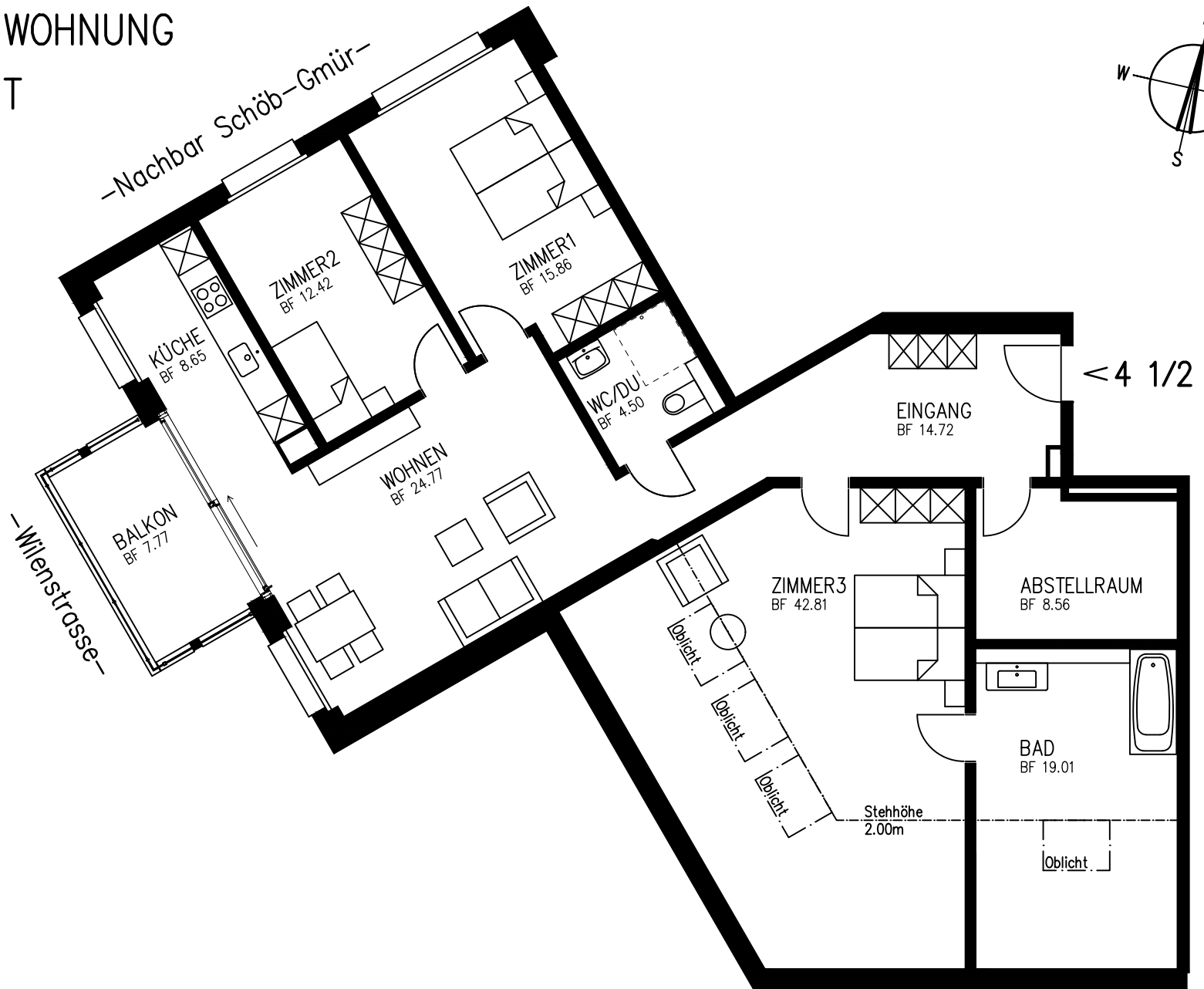
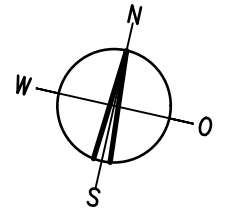
W-13 vermietet



4½-ZIMMER-WOHNUNG

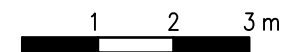
5. ETAGE WEST

120.60 M<sup>2</sup>



W-31

-Wilenstrasse-

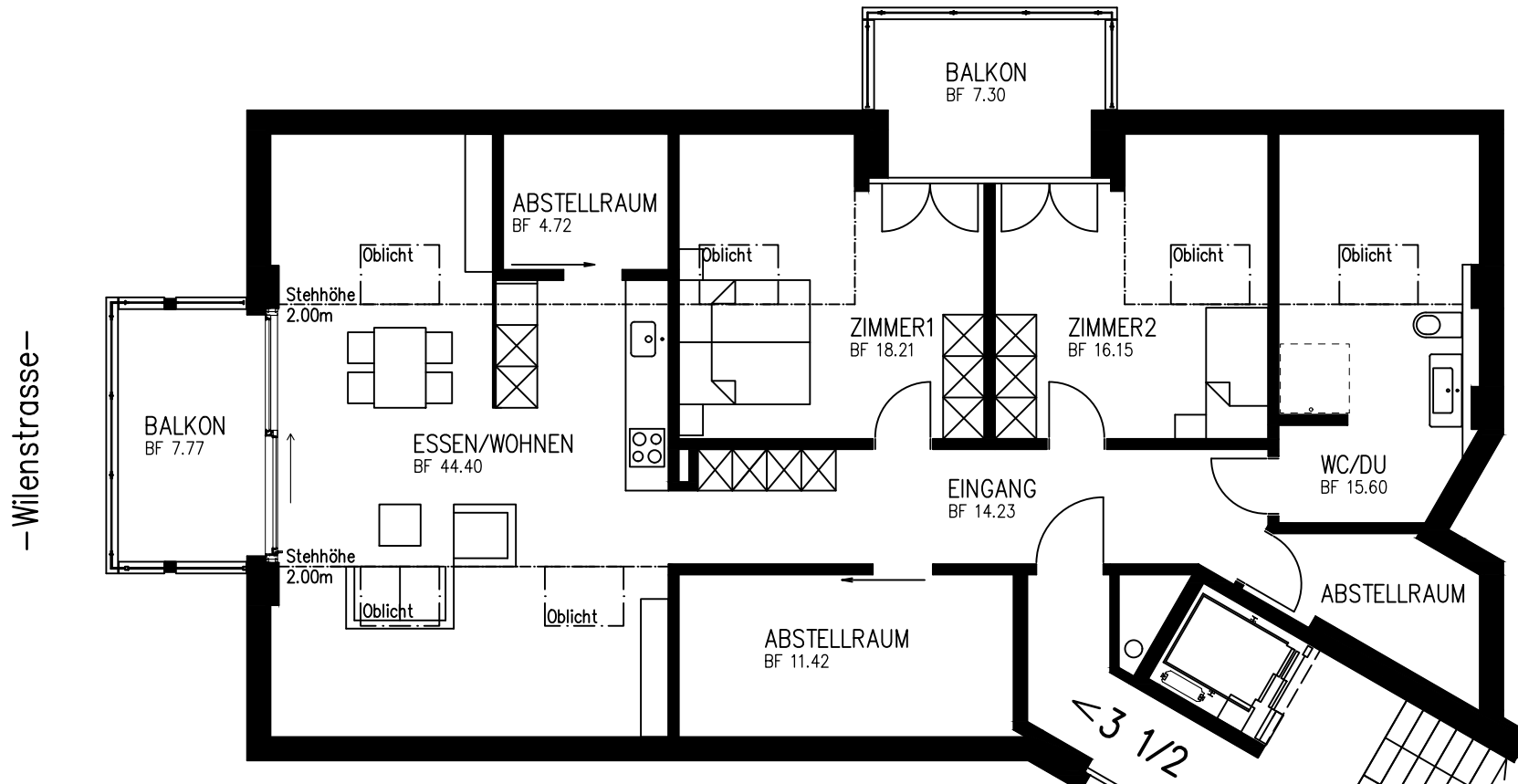


# 3½-ZIMMER-WOHNUNG 6.ETAGE WEST

67.00 M2



–Nachbar Schöb–Gmür–



W-41

